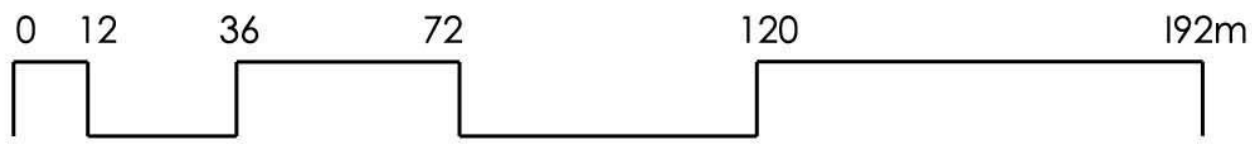
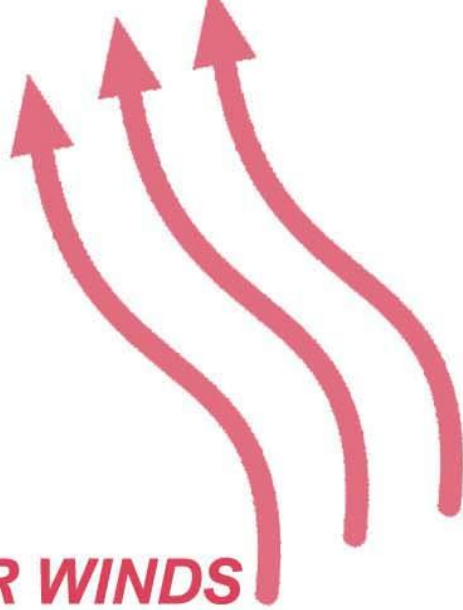




LOCAL CONTEXT PLAN

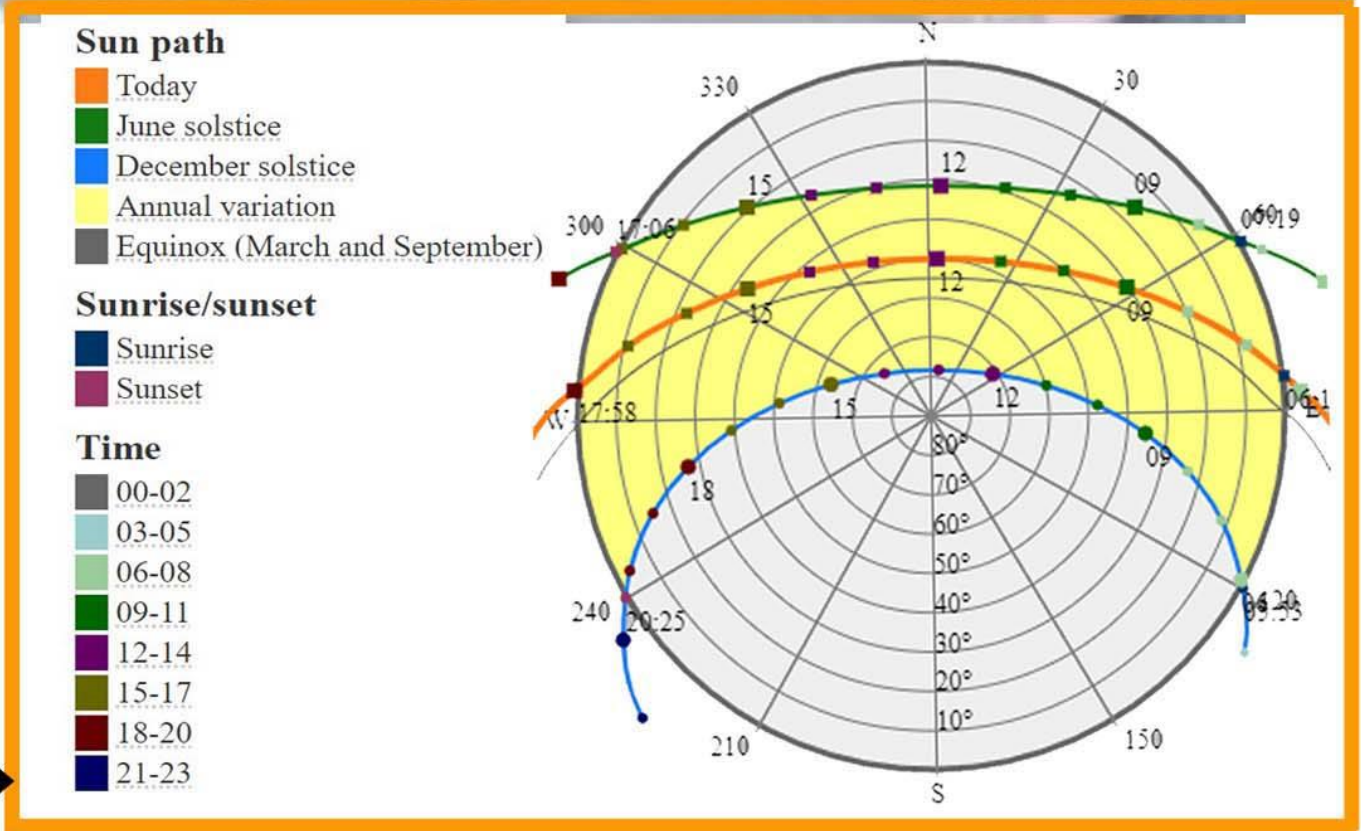


WINTER WINDS



SUMMER WINDS

SUN PATH DIAGRAM FOR GRIFFITH NSW



GRA DESIGN PTY LTD 6 BRISBANE ST BONDI JUNCTION NSW 2022
W: <https://gradesign.com.au/> T: 0417876665 02 99093344
ACN 137481755 CLASS II NO: PDP0000804 + DEP0002326
E: georges@gradesign.com.au

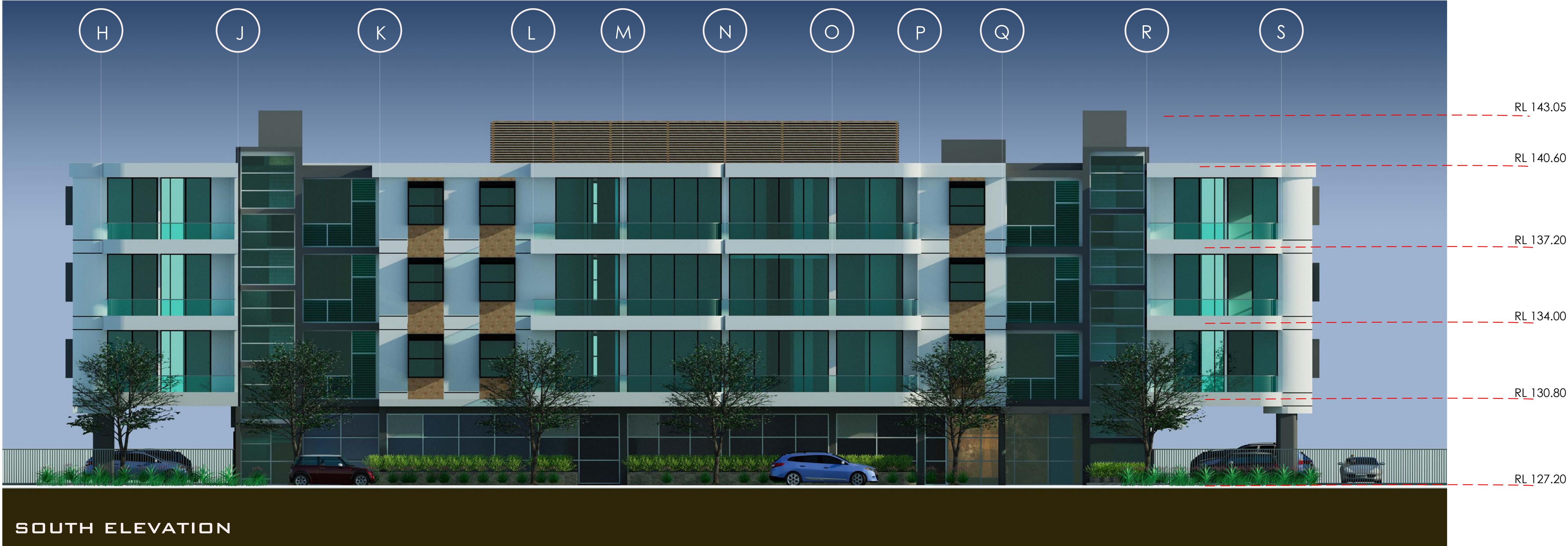
LEFFLER SIMES ARCHITECTS 7 YOUNG ST NEUTRAL BAY NSW 2089
12 370 LT BOURKE ST VIC 3000 ACN 001043992
E: reception@lefflersimes.com.au W: www.lefflersimes.com.au

CLIENT
Joss Group

PROJECT
Griffith Residential
Lot 1 65-67 Railway St Griffith NSW 2680

DRAWING
GRIFFITH CONTEXT PLAN

DATE	SCALE	DRAWN
MAY 2024	1:1200	GMR
PROJ.	DWG NO.	ISSUE
5276	DA 03	



Refer to DA13 for Finishes



GRA
DESIGN

LEFFLER SIMES ARCHITECTS
PROJ 5276

GRA DESIGN PTY LTD 6 BRISBANE ST BONDI JUNCTION NSW 2022
W: <https://gradesign.com.au/> T: 0417876665 02 99093344
ACN 137481755 CLASS II NO: PDP0000804 + DEP0002326
E: georges@gradesign.com.au

LEFFLER SIMES ARCHITECTS 7 YOUNG ST NEUTRAL BAY NSW 2089
12 370 LT BOURKE ST VIC 3000 ACN 001043992
E: reception@lefflersimes.com.au W: www.lefflersimes.com.au

CLIENT
Joss Group

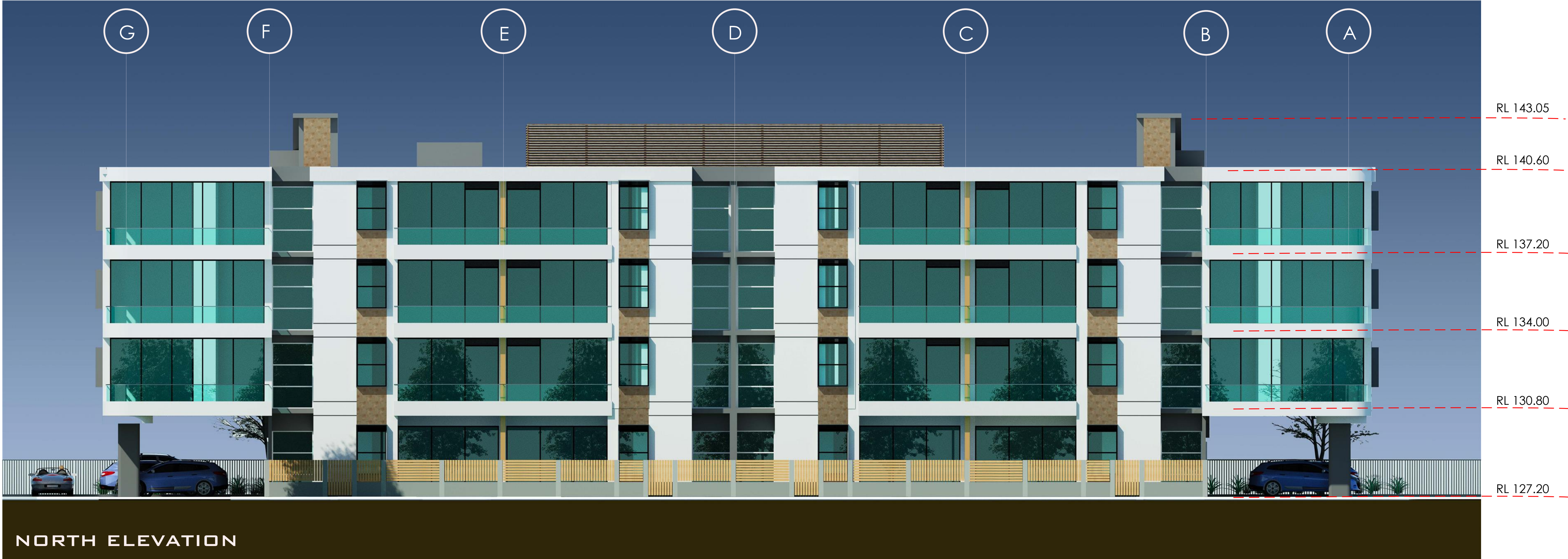
PROJECT
Griffith Residential
Lot 1 65-67 Railway St Griffith NSW 2680

DRAWING

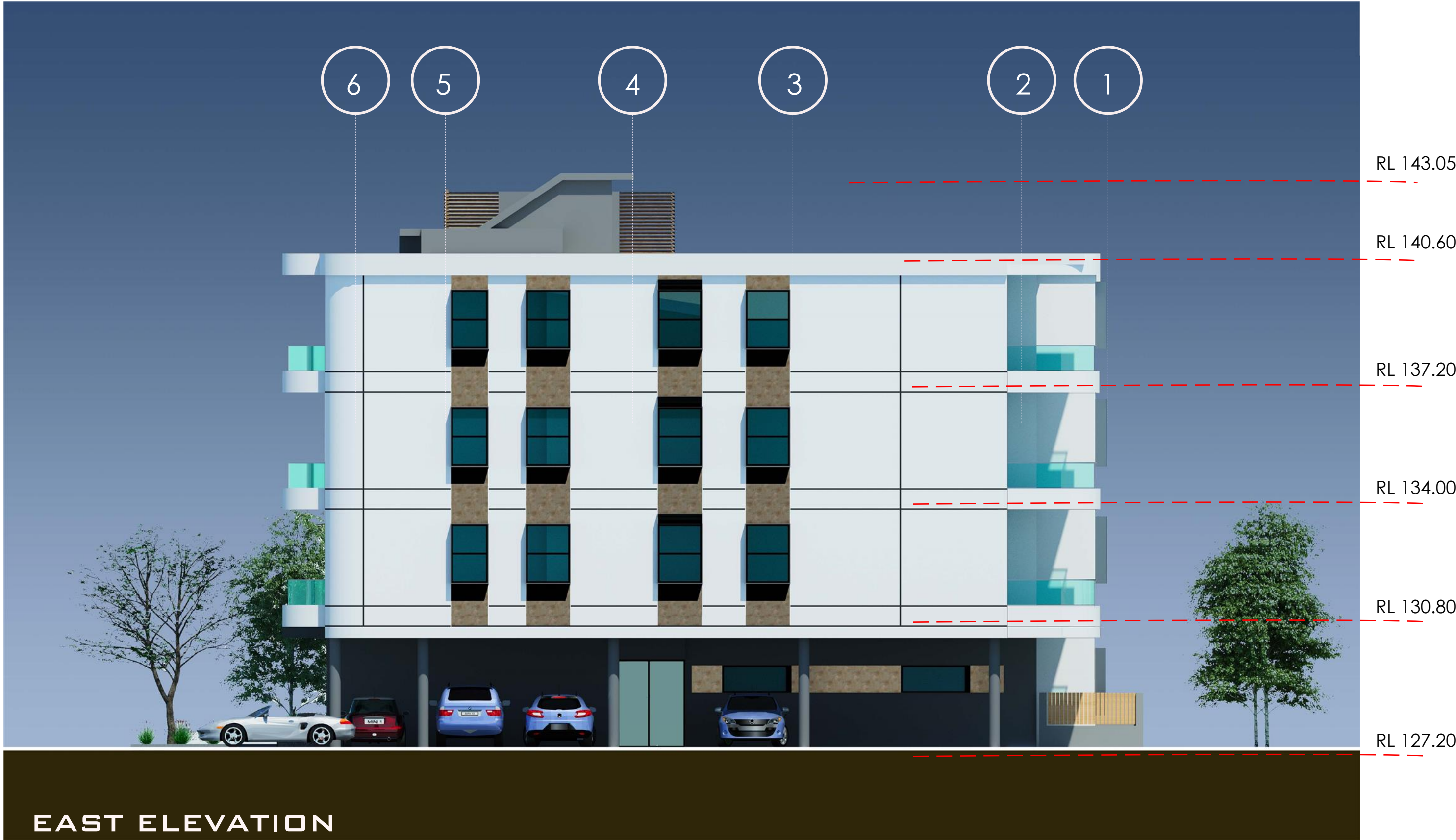
ELEVATIONS 1

DATE	SCALE	DRAWN
MAY 2024	1:100	GMR

PROJ.	DWG NO.	ISSUE
5276	DA 11	



Refer to DA13 for Finishes



GRA
DESIGN

LEFFLER SIMES ARCHITECTS
PROJ 5276

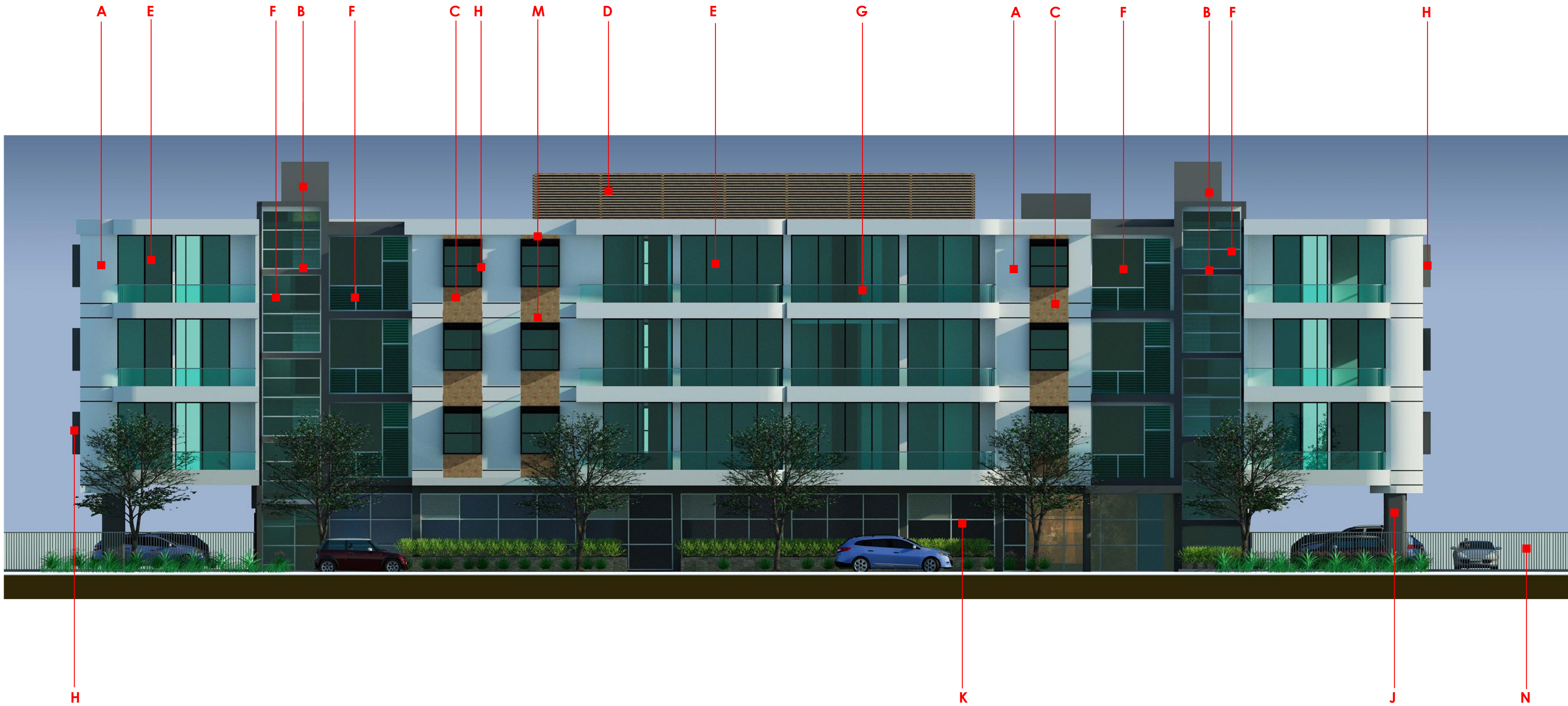
GRA DESIGN PTY LTD 6 BRISBANE ST BONDI JUNCTION NSW 2022
W: <https://gradesign.com.au/> T: 0417876665 02 99093344
ACN 137481755 CLASS II NO: PDP0000804 + DEP0002326
E: georges@gradesign.com.au

LEFFLER SIMES ARCHITECTS 7 YOUNG ST NEUTRAL BAY NSW 2089
L2 370 LT BOURKE ST VIC 3000 ACN 001043992
E: reception@lefflersimes.com.au W: www.lefflersimes.com.au

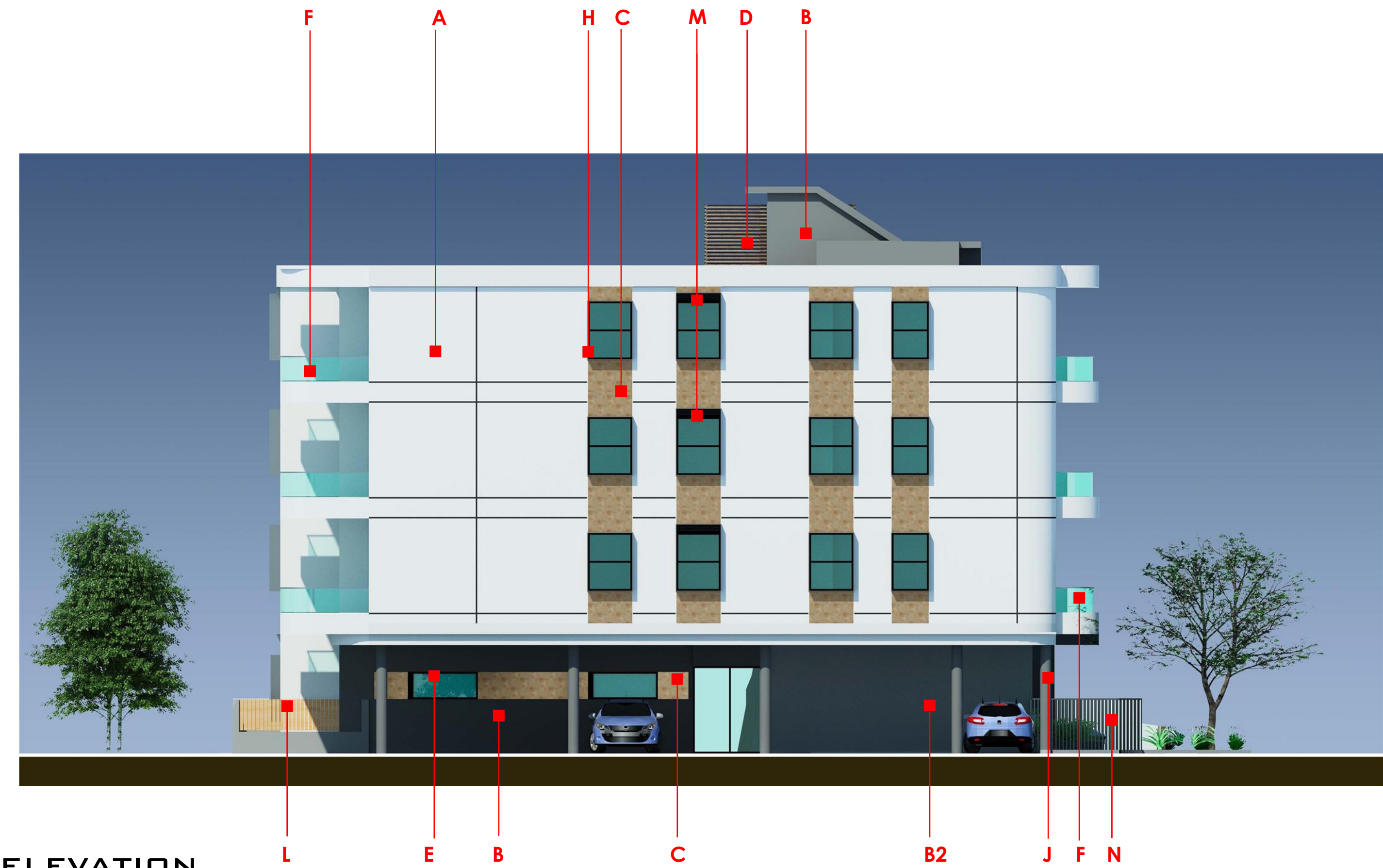
CLIENT
Joss Group

PROJECT
Griffith Residential
Lot 1 65-67 Railway St Griffith NSW 2680

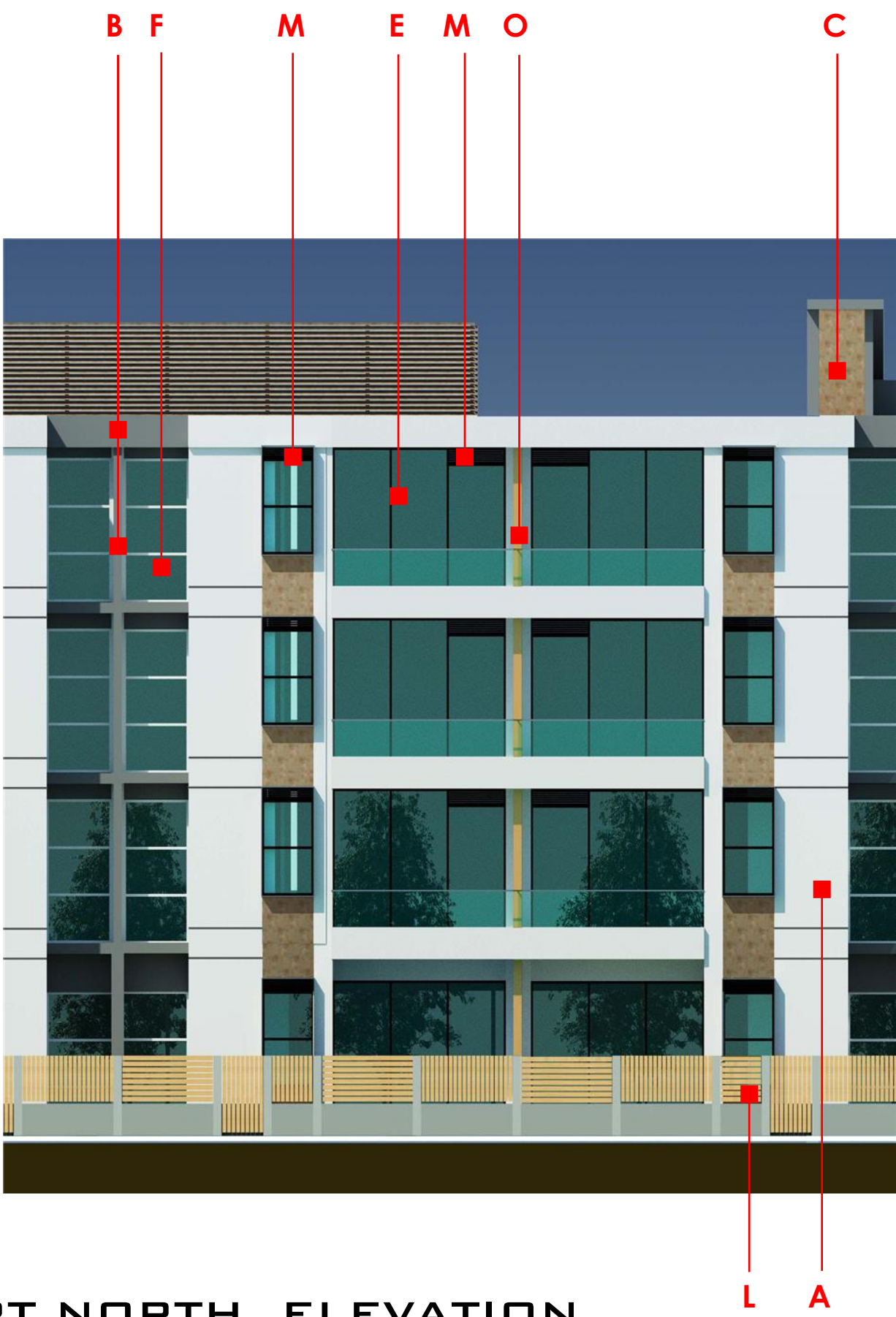
DRAWING		
ELEVATIONS 1		
DATE	SCALE	DRAWN
MAY 2024	1:100	GMR
PROJ.	DWG NO.	ISSUE
5276	DA 12	



SOUTH ELEVATION



WEST ELEVATION



PART NORTH ELEVATION

LEGEND	
A	Precast & Concrete panels, smooth finish; applied paint over. Acratex (or similar) in Dulux "Whisper White" PN1F2
B	Precast & Concrete panels, smooth finish; applied paint over. Acratex (or similar) in Dulux "Tinker" PG2G4
B2	Precast & Concrete panels, smooth finish; applied paint over. Acratex (or similar) in Dulux "Mirrored Edge" PG2H1
C	Metal Panels fixed over concrete in Dulux Powder Coat: Electro "New Copper Kinetic" Flat 9068432F
D	Louvres 150mm fixed at 30 degrees. Dulux Powder Coat Electro "Medium Bronze Kinetic" Flat 9068183F
E	Main Glazing 1 Aluminium frames with green tinge glass. Alum in Powder Coat finish: Duratec "Titanium Pearl Kinetic" Satin 91T7797M
F	Main Glazing 2 Aluminium frames with grey tinge glass. Alum in Powder Coat finish: Duratec "Whisper White" Matt 90Z1376M
G	Balconies Clear Glass fixed flush to concrete base internal. Metal top rail polished stainless steel, 30mm high capping
H	Window Hoods Heka brand 300mm deep standard steel frames. Finish: Powder Coat Duratec "Titanium Pearl Kinetic" Satin 91T7797M
J	Exposed Columns Precast columns 900x300, rounded ends, paint finish Acratex (or similar) in "Tinker" PG2G4
K	Main Glazing 3 Aluminium frames with "grey satin etch" obscure glass by Glass Australia (or similar). Alum in Powder Coat finish: Duratec "Whisper White" Matt 90Z1376M
L	Courtyard Fencing Masonry Base and piers, rendered and painted in B2 (above). Infill panels in aluminium slats 50x10 in Powder Coat Decowood "Natural Snow Gum"
M	Louvre Grill Relief Air Motorised Grille. Finished to match window frames
N	Front Fencing & Sliding Gate 1.5m high Aluminium slat fencing; 65x16 slats in black powder coat
O	Balcony Screens Aluminium battens, 50x20 fixed to concrete base. Finish: Powder Coat Decowood "Natural Snow Gum"

GRA
DESIGN

LEFFLER SIMES ARCHITECTS

PROJ 5276

GRA DESIGN PTY LTD 6 BRISBANE ST BONDI JUNCTION NSW 2022
W: <https://gradesign.com.au/> T: 0417876665 02 99093344
ACN 137481755 CLASS II NO: PDP0000804 + DEP0002326
E: georges@gradesign.com.au

LEFFLER SIMES ARCHITECTS 7 YOUNG ST NEUTRAL BAY NSW 2089
L2 370 LT BOURKE ST VIC 3000
L5 131 U39 LEICHARDT ST SPRING HILL QLD 4000 ACN 001043992
E: reception@lefflersimes.com.au W: www.lefflersimes.com.au

CLIENT

Joss Group

PROJECT

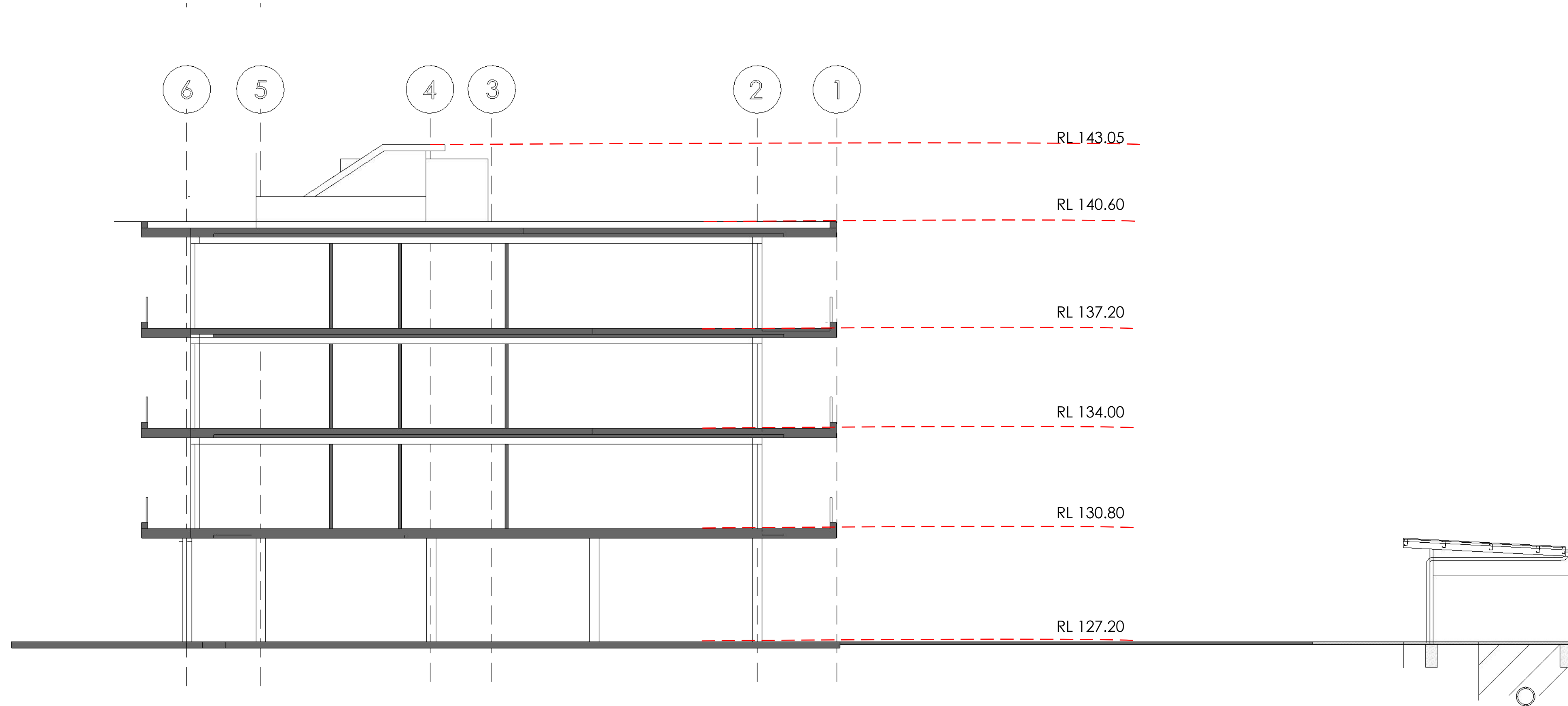
Griffith Residential
Lot 1 65-67 Railway St Griffith NSW 2680

DRAWING

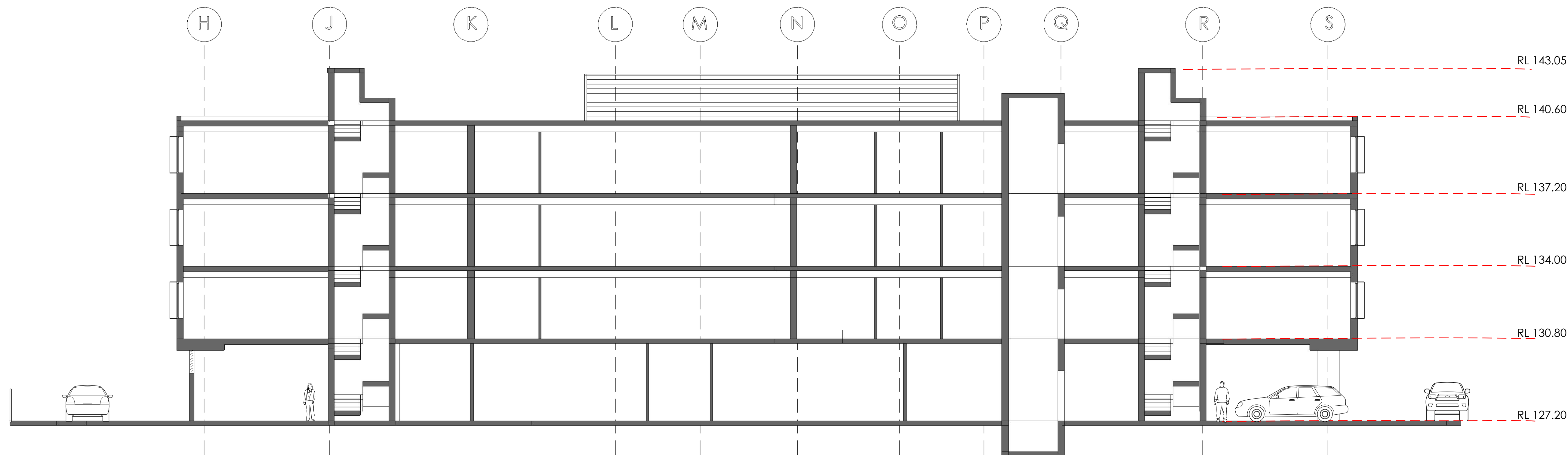
FINISHES

DATE	SCALE	DRAWN
MAY 2024	1:100	GMR

PROJ.	DWG NO.	ISSUE
5276	DA 13	



SECTION AA 1:100



SECTION DD 1:100



GRA DESIGN PTY LTD 6 BRISBANE ST BONDI JUNCTION NSW 2022
W: <https://gradesign.com.au/> T: 0417876665 02 99093344
ACN 137481755 CLASS II NO: PDP0000804 + DEP0002326
E: georges@gradesign.com.au

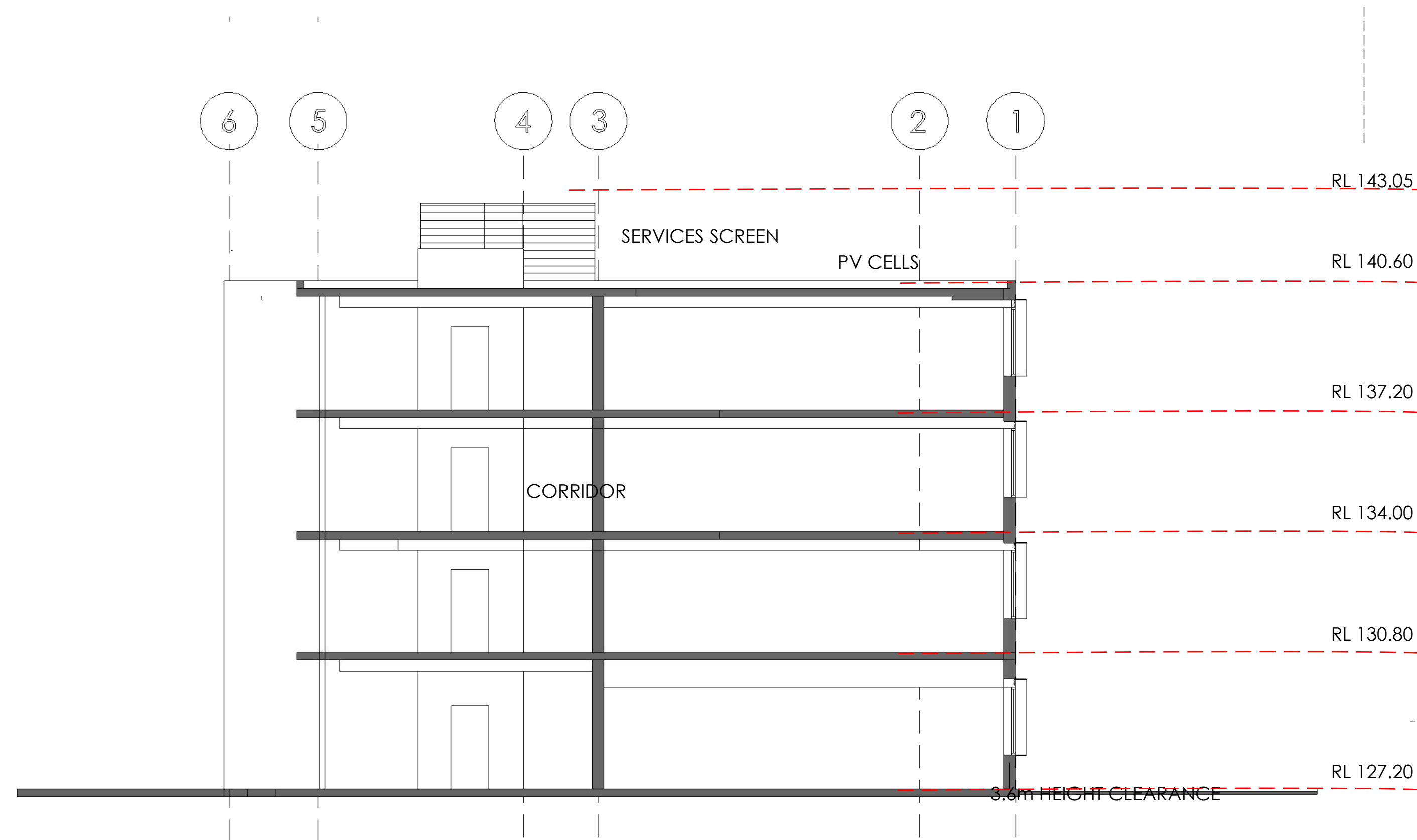
LEFFLER SIMES ARCHITECTS 7 YOUNG ST NEUTRAL BAY NSW 2089
L2 370 LT BOURKE ST VIC 3000 ACN 001043992
E: reception@lefflersimes.com.au W: www.lefflersimes.com.au

CLIENT
Joss Group

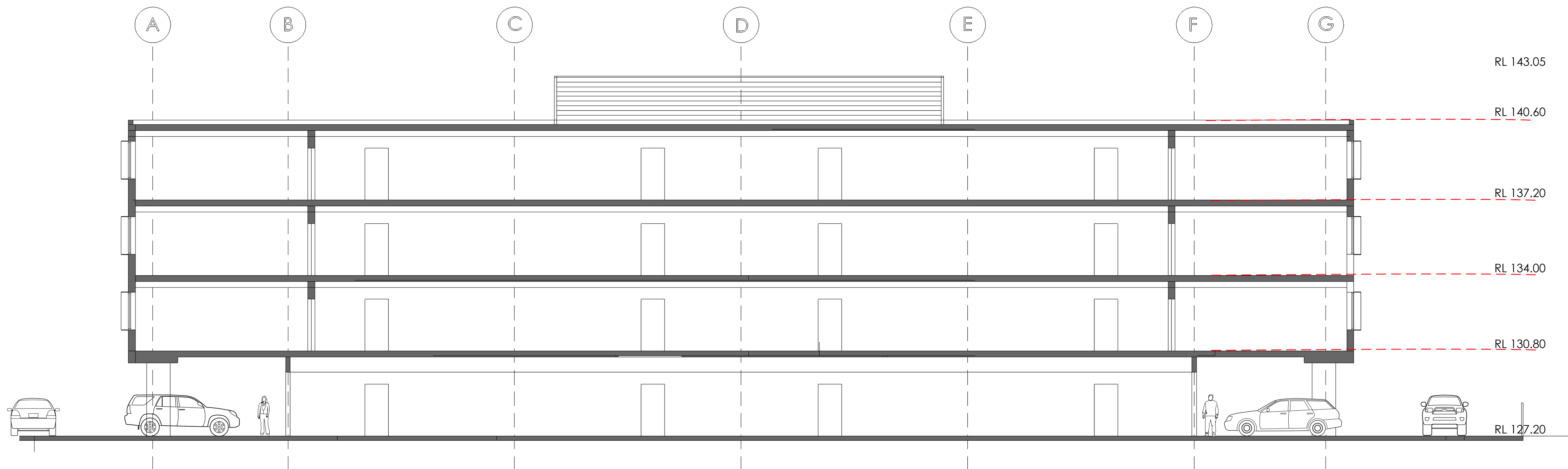
PROJECT
Griffith Residential
Lot 1 65-67 Railway St Griffith NSW 2680

DRAWING

SECTIONS AA & DD		
DATE	SCALE	DRAWN
MAY 2024	1:100	GMR
PROJ.	DWG NO.	ISSUE
5276	DA 14	



SECTION BB 1:100



SECTION EE 1:100

GRA
DESIGN

LEFFLER SIMES ARCHITECTS
PROJ 5276

GRA DESIGN PTY LTD 6 BRISBANE ST BONDI JUNCTION NSW 2022
W: <https://gradesign.com.au/> T: 0417876665 02 99093344
ACN 137481755 CLASS II NO: PDP0000804 + DEP0002326
E: georges@gradesign.com.au

LEFFLER SIMES ARCHITECTS 7 YOUNG ST NEUTRAL BAY NSW 2089
L2 370 LT BOURKE ST VIC 3000
L5 131 U39 LEICHDART ST SPRING HILL QLD 4000 ACN 001043992
E: reception@lefflersimes.com.au W: www.lefflersimes.com.au

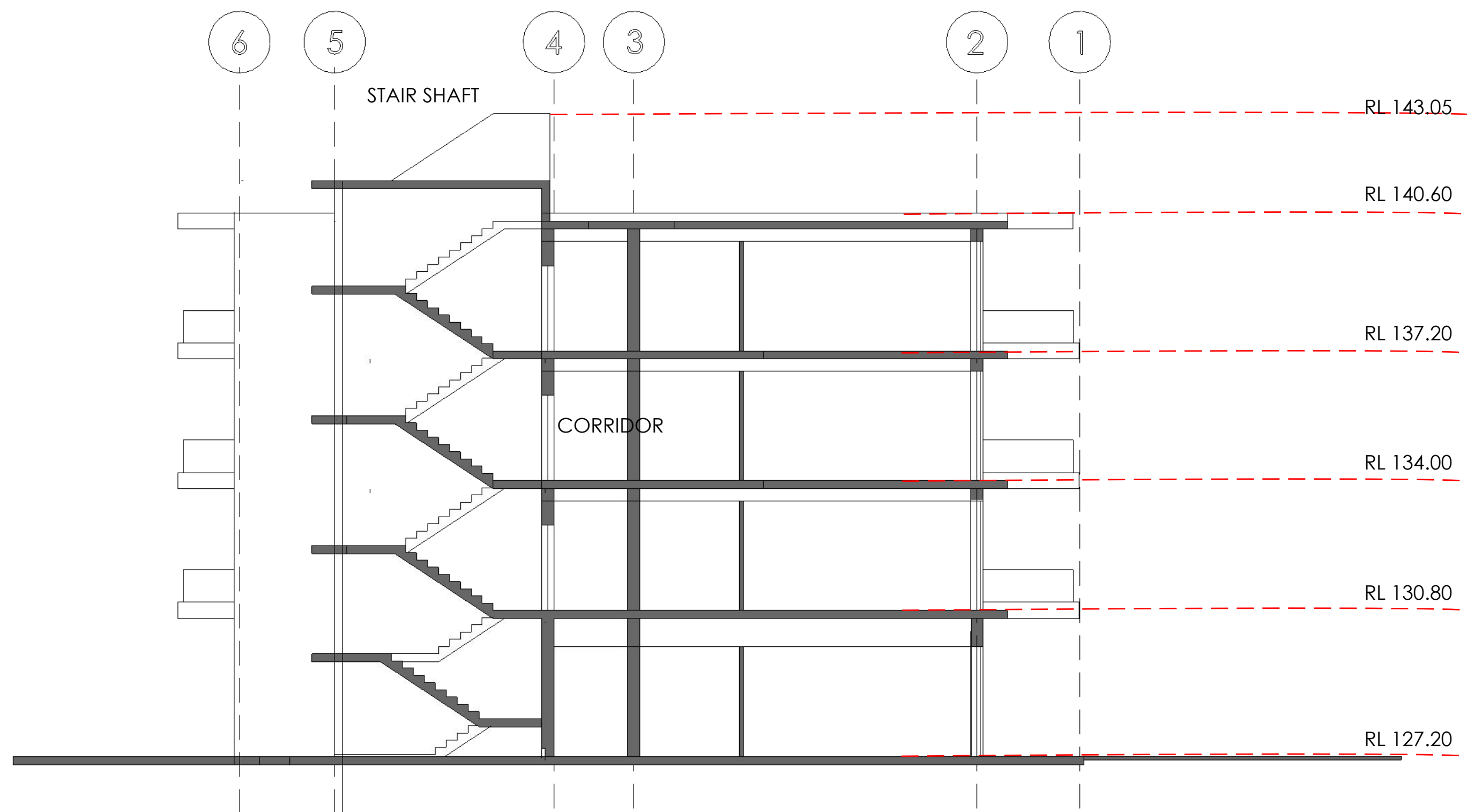
CLIENT
Joss Group

PROJECT
Griffith Residential
Lot 1 65-67 Railway St Griffith NSW 2680

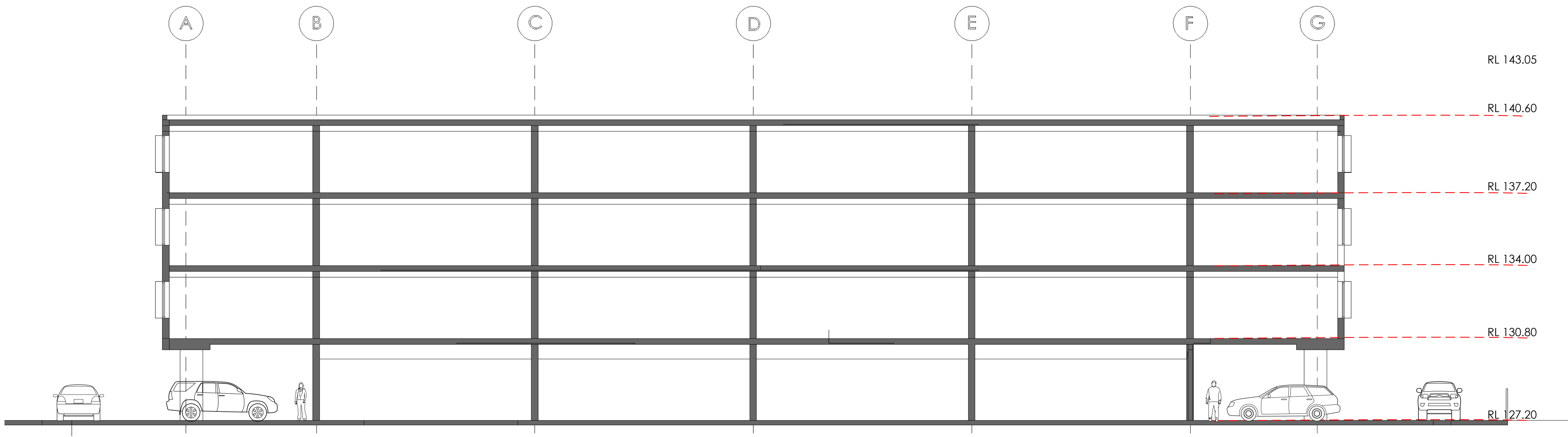
DRAWING

SECTIONS BB & EE

DATE	SCALE	DRAWN
MAY 2024	1:100	GMR
PROJ.	DWG NO.	ISSUE
5276	DA 15	



SECTION CC 1:100



SECTION FF 1:100



GRA DESIGN PTY LTD 6 BRISBANE ST BONDI JUNCTION NSW 2022
W: <https://gradesign.com.au/> T: 0417876665 02 99093344
ACN 137481755 CLASS II NO: PDP0000804 + DEP0002326
E: georges@gradesign.com.au
LEFFLER SIMES ARCHITECTS 7 YOUNG ST NEUTRAL BAY NSW 2089
L2 370 LT BOURKE ST VIC 3000 ACN 001043992
E: reception@lefflersimes.com.au W: www.lefflersimes.com.au

CLIENT
Joss Group

PROJECT
Griffith Residential
Lot 1 65-67 Railway St Griffith NSW 2680

DRAWING

SECTIONS CC & FF		
DATE	SCALE	DRAWN
MAY 2024	1:100	GMR
PROJ.	DWG NO.	ISSUE
5276	DA 16	