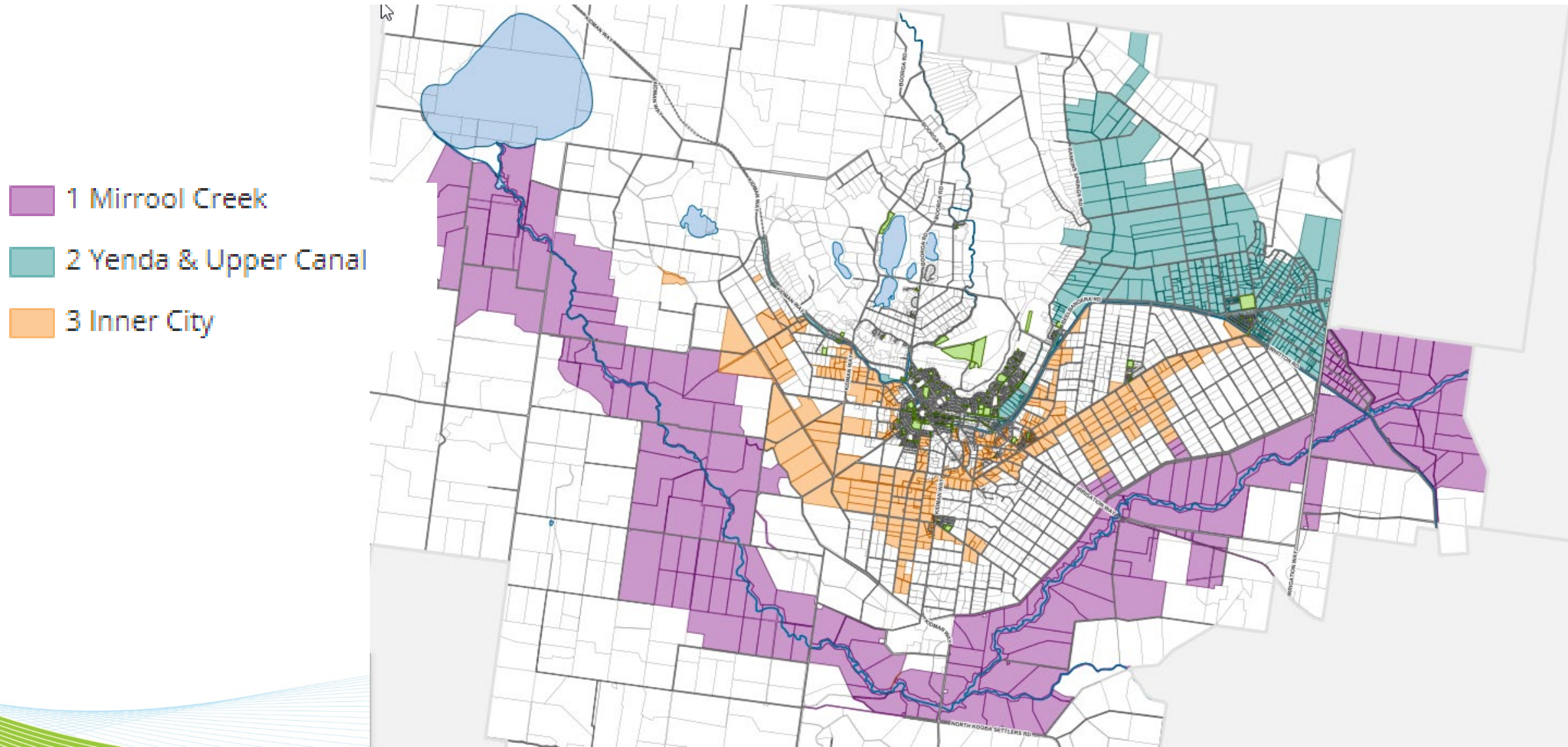


Mirrool Creek Levees Community Forum 5 February 2019

Flood Affected Properties in 2012



- Since 2012 Council has been informed that there has been structures constructed along Mirrool Creek.
- Over 230 Properties have been identified in the Mirrool Creek Levee investigation zone.

Consultation with Water NSW

- Water NSW was consulted in relation to the regulations under the *Water Management Act 2000*.
- Council sought legal advice in relation to the responsibilities Council has as a Floodplain Manager.

Consultation with Murrumbidgee Irrigation

- Griffith City Council and Murrumbidgee Irrigation are working together so that the operation of Mirrool Creek is optimised for Water Supply and Flood Mitigation.

Options for Council Going Forward

- Council resolved at the Ordinary Meeting on 22 January 2019

“that a forum be held on 5 February 2019 to inform the community about the impact of levees and structures constructed along Mirrool Creek which may impact on properties during times of flood”.

- Council could investigate and survey properties in the Mirrool Creek Levee Investigation Zone for the purpose of identifying significant changes to the landscape since the 2012 flood event.
- Council could then consider what action to take as a result of this investigation and act on any legal advice given.