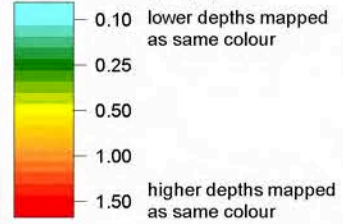


LEGEND

Peak Flood Depth (m)



Peak Flood Level
Contours (m AHD)

Title:

**Griffith Main Drain J Catchment Flood Study 1% AEP
Modelled Peak Flood Conditions - Hanwood**

BMT WBM endeavours to ensure that the information provided in this map is correct at the time of publication. BMT WBM does not warrant, guarantee or make representations regarding the currency and accuracy of information contained in this map.



0 0.5 1km
Approx. Scale

Figure:

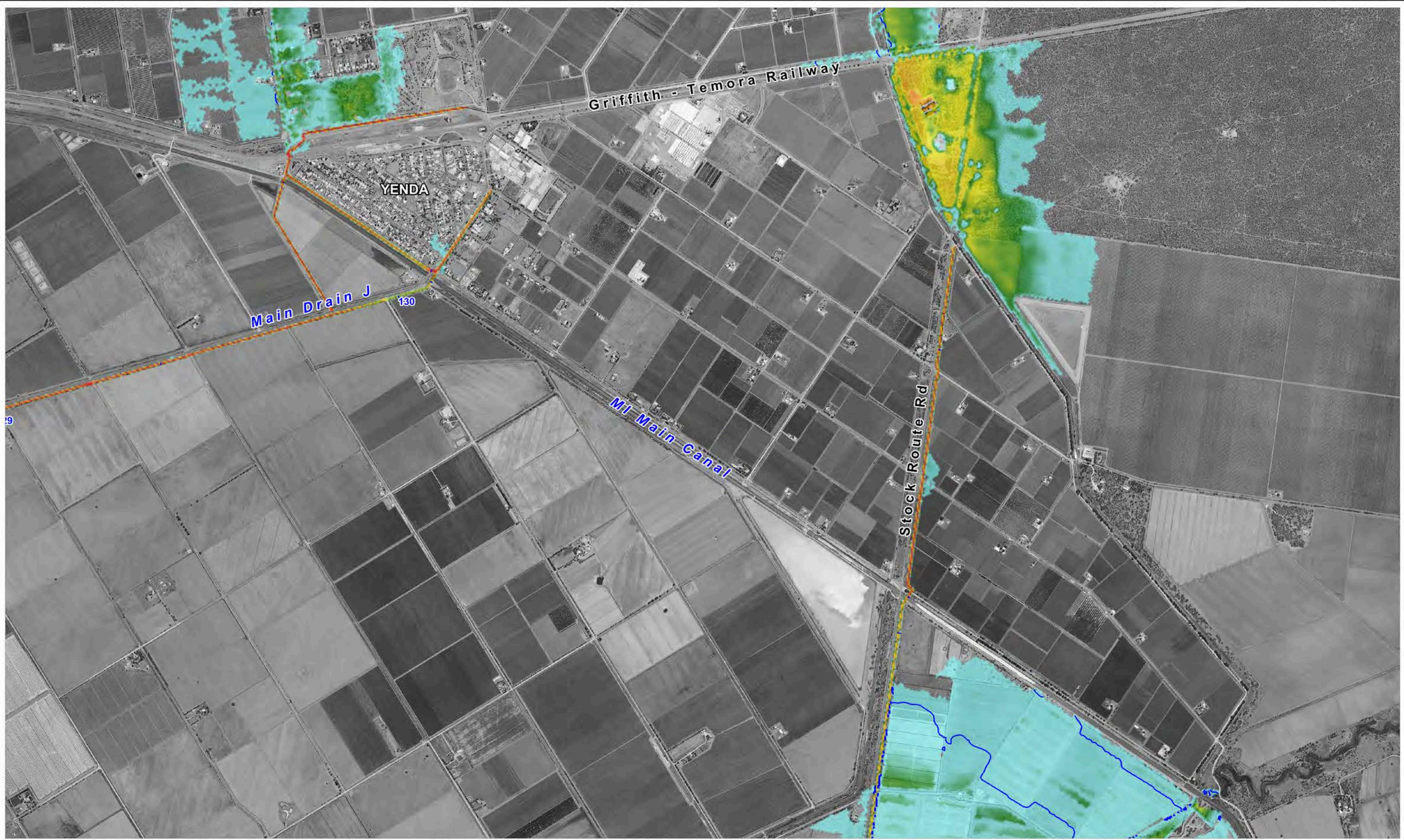
C-6

Rev:

B

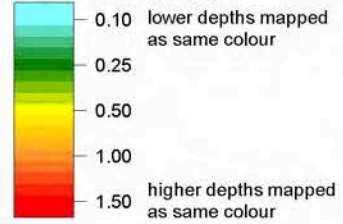


Filepath : K:\N20024_Main_Drain_J_Mirrool_Ck_FRMS\MapInfo\Workspaces\DRG_306_140915_1%AEP_Results.WOR



LEGEND

Peak Flood Depth (m)



Peak Flood Level
Contours (m AHD)

Title:

**Griffith Main Drain J Catchment Flood Study 1% AEP
Yenda Peak Flood Conditions - Local Runoff Only**

BMT WBM endeavours to ensure that the information provided in this map is correct at the time of publication. BMT WBM does not warrant, guarantee or make representations regarding the currency and accuracy of information contained in this map.

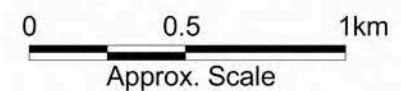


Figure:

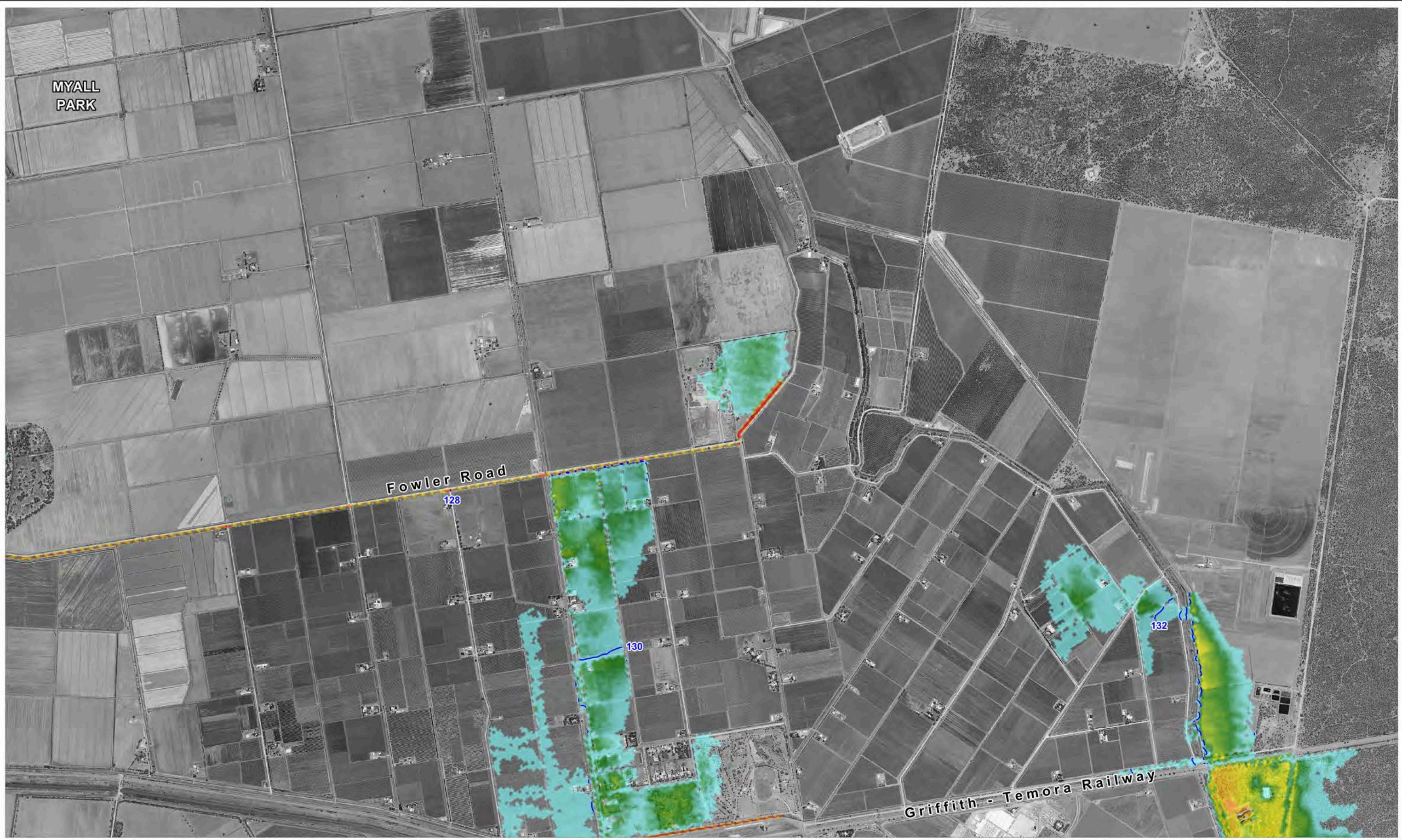
C-8

Rev:

A



Filepath : K:\N20024_Main_Drain_J_Mirrool_Ck_FRMS\MapInfo\Workspaces\DRG_308_140915_1% AEP_Results.WOR



LEGEND

Peak Flood Depth (m)

0.10
lower depths mapped
as same colour

0.25
0.50
1.00
1.50
higher depths mapped
as same colour

Peak Flood Level
Contours (m AHD)

20

Title:

**Griffith Main Drain J Catchment Flood Study 1% AEP
North Yenda Peak Flood Conditions - Local Runoff Only**

BMT WBM endeavours to ensure that the information provided in this map is correct at the time of publication. BMT WBM does not warrant, guarantee or make representations regarding the currency and accuracy of information contained in this map.

N

0 0.5 1km

Approx. Scale

Filepath : K:\N20024_Main_Drain_J_Mirrool_Ck_FRMS\MapInfo\Workspaces\DRG_309_140915_1%AEP_Results.WOR

Figure:

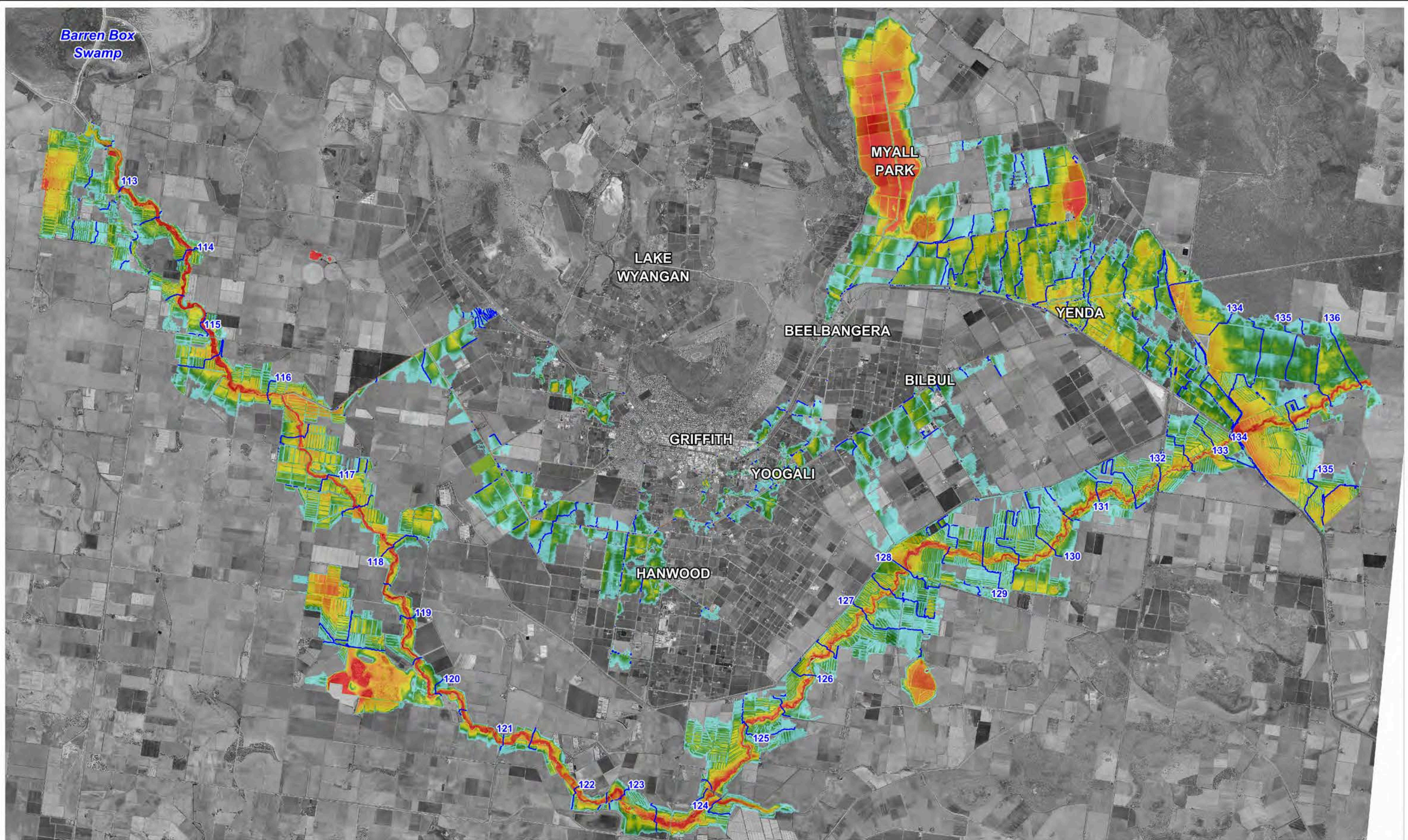
C-9

Rev:

A

BMT WBM

www.bmtwbm.com.au



LEGEND

Peak Flood Depth (m)

0.10 lower depths mapped as same colour

0.25

0.50

1.00

1.50 higher depths mapped as same colour

20 Peak Flood Level Contours (m AHD)

Title:
**Griffith Main Drain J Catchment Flood Study 0.5% AEP
Modelled Peak Flood Conditions - Overview**

BMT WBM endeavours to ensure that the information provided in this map is correct at the time of publication. BMT WBM does not warrant, guarantee or make representations regarding the currency and accuracy of information contained in this map.

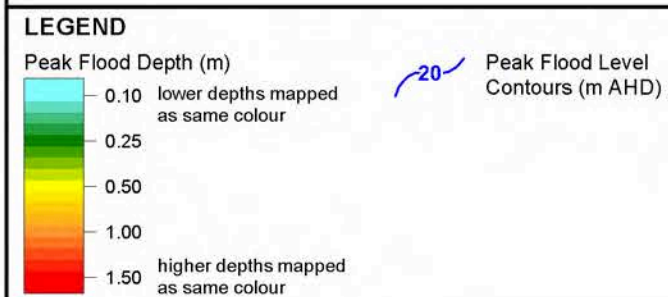
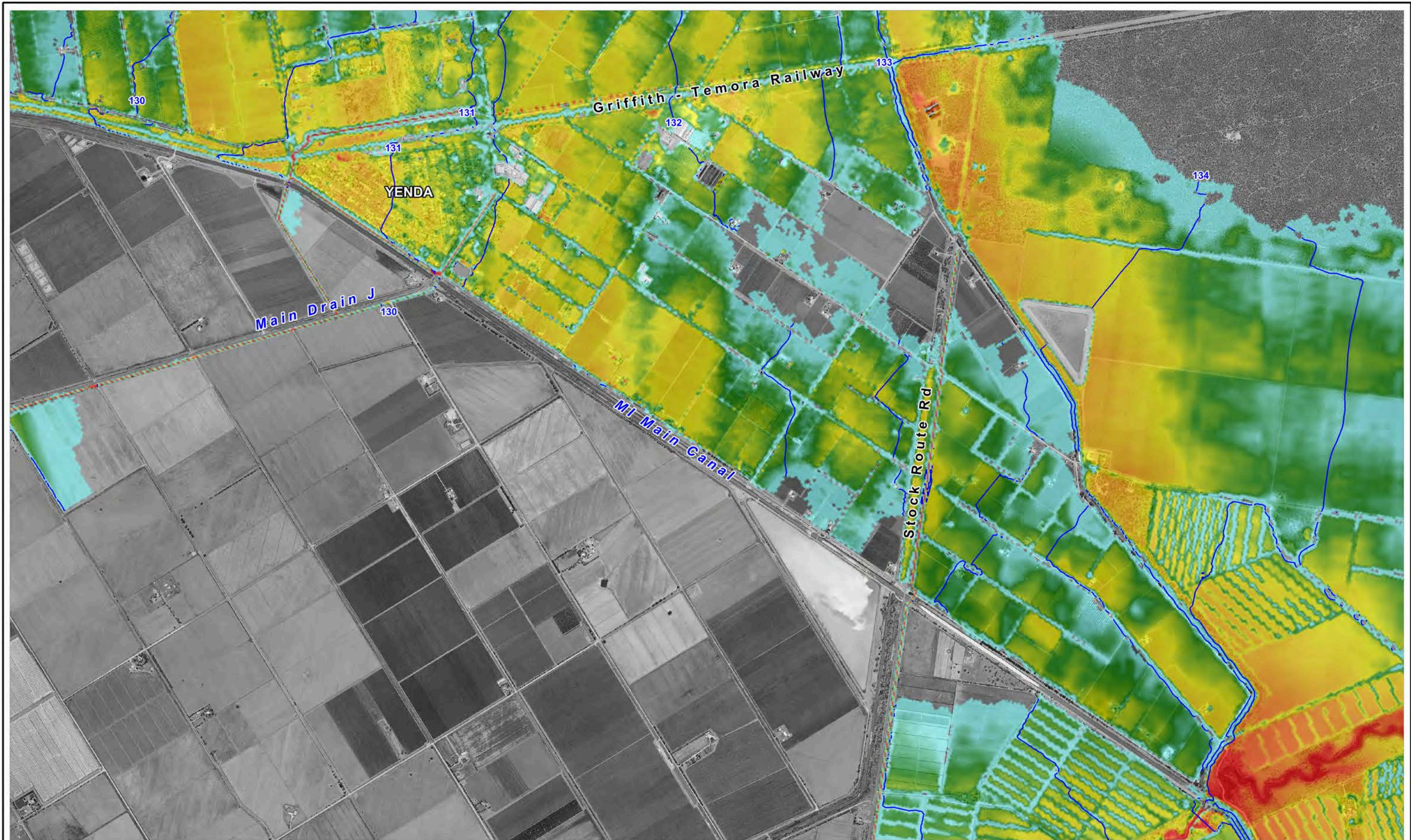
Figure:
D-1

Rev:
A

0 2.5 5km
Approx. Scale

Filepath : K:\N20024_Main_Drain_J_Mirrool_Ck_FRMS\MapInfo\Workspaces\DRG_401_140915_0.5%AEP_Results.WOR





Title:

Griffith Main Drain J Catchment Flood Study 0.5% AEP Modelled Peak Flood Conditions - Yenda

BMT WBM endeavours to ensure that the information provided in this map is correct at the time of publication. BMT WBM does not warrant, guarantee or make representations regarding the currency and accuracy of information contained in this map.

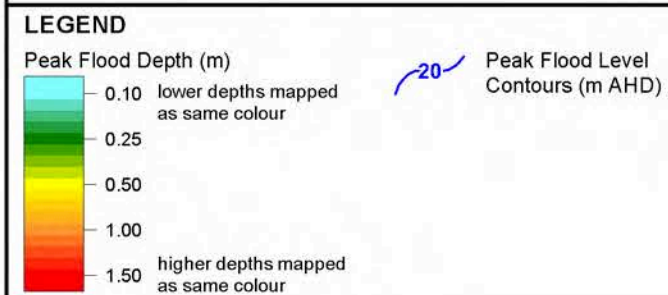
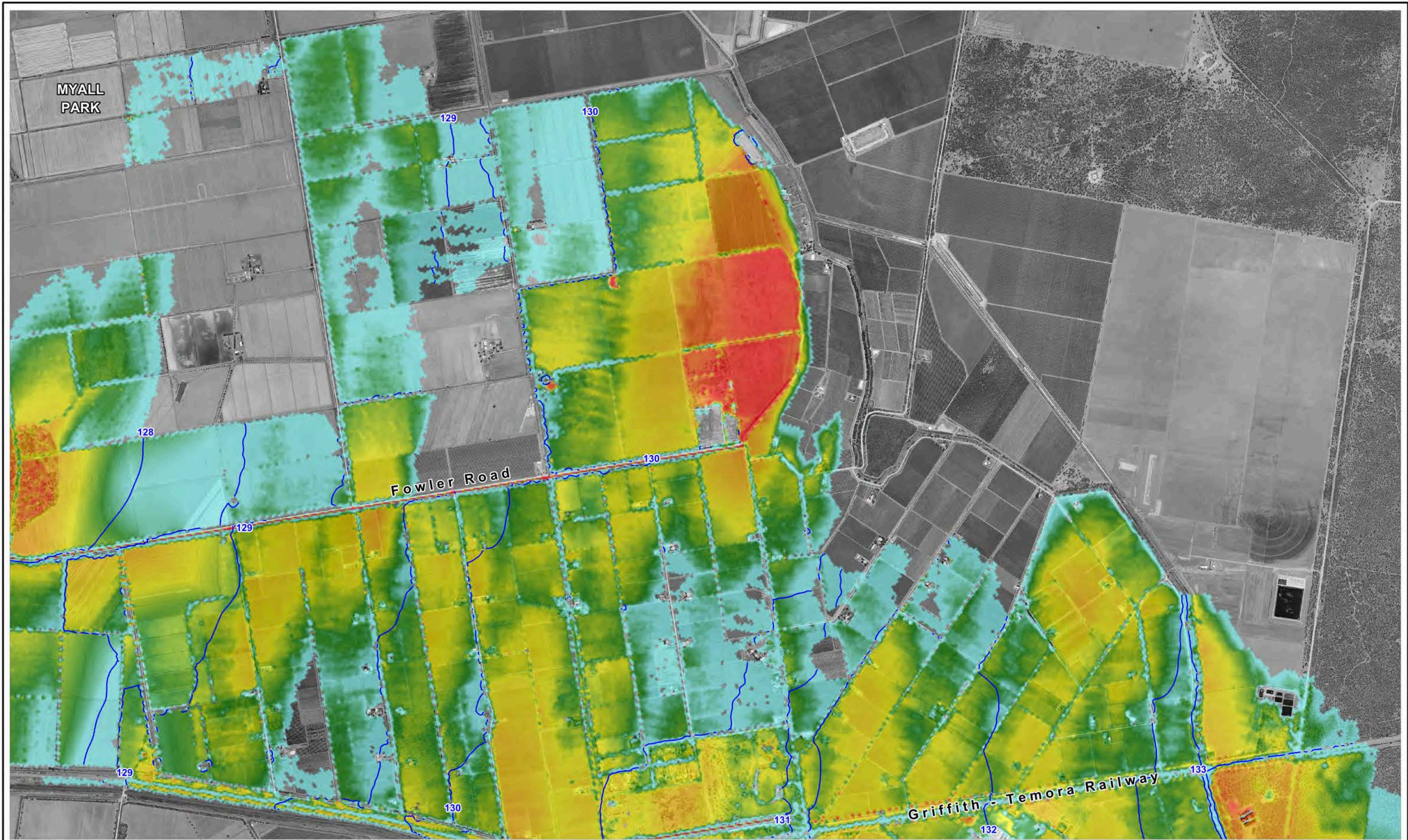


0 0.5 1km
Approx. Scale

Figure: D-2
Rev: A



Filepath : K:\N20024_Main_Drain_J_Mirrool_Ck_FRMS\MapInfo\Workspaces\DRG_402_140915_0.5%AEP_Results.WOR



Title:

**Griffith Main Drain J Catchment Flood Study 0.5% AEP
Modelled Peak Flood Conditions - North Yenda**

BMT WBM endeavours to ensure that the information provided in this map is correct at the time of publication. BMT WBM does not warrant, guarantee or make representations regarding the currency and accuracy of information contained in this map.



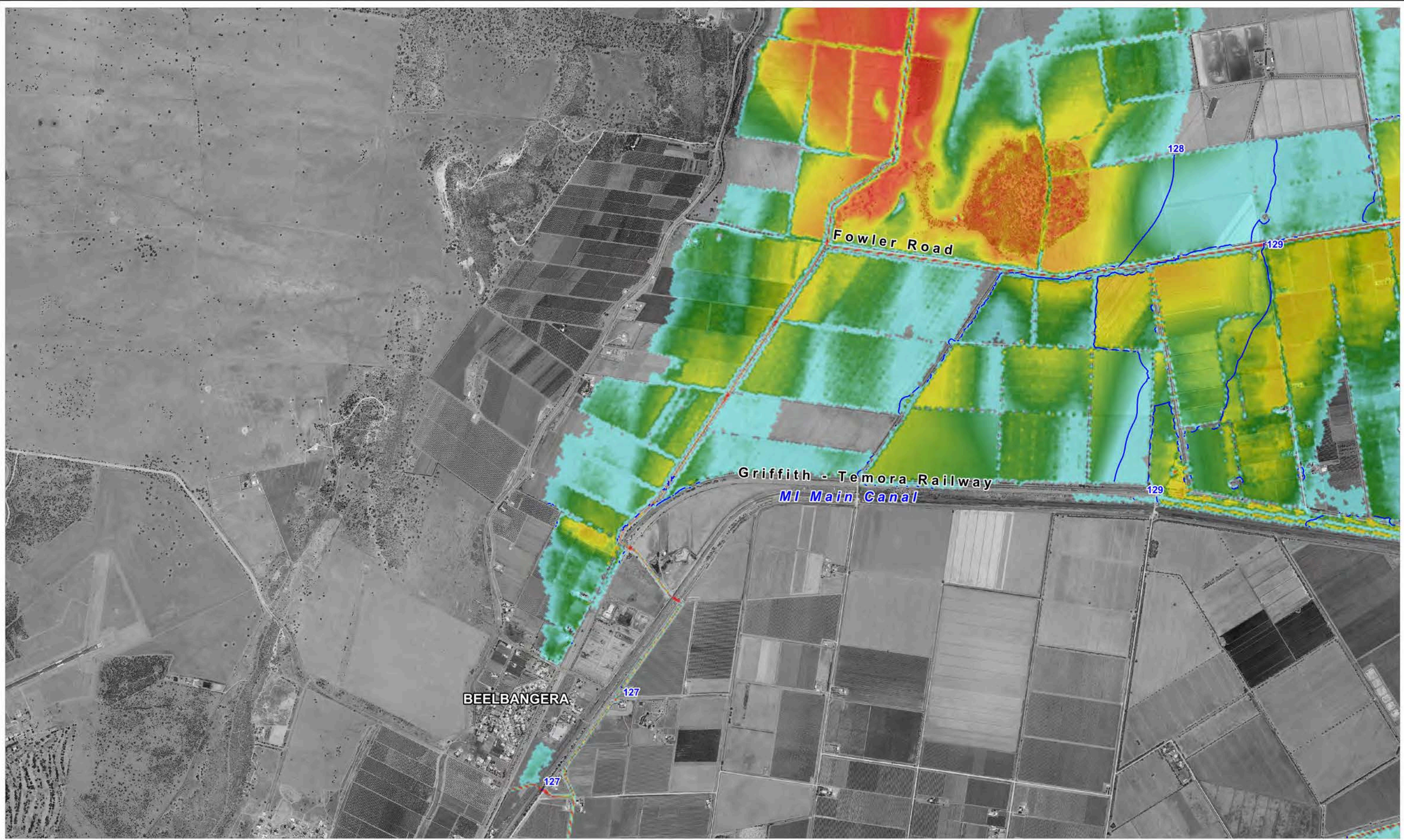
0 0.5 1km
Approx. Scale

Figure:
D-3

Rev:
A

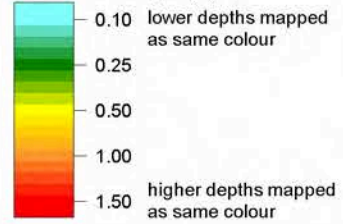


Filepath : K:\N20024_Main_Drain_J_Mirrool_Ck_FRMS\MapInfo\Workspaces\DRG_403_140915_0.5%AEP_Results.WOR



LEGEND

Peak Flood Depth (m)



Peak Flood Level
Contours (m AHD)

Title:

**Griffith Main Drain J Catchment Flood Study 0.5% AEP
Modelled Peak Flood Conditions - Beelbanger**

BMT WBM endeavours to ensure that the information provided in this map is correct at the time of publication. BMT WBM does not warrant, guarantee or make representations regarding the currency and accuracy of information contained in this map.



0 0.5 1km
Approx. Scale

Figure:

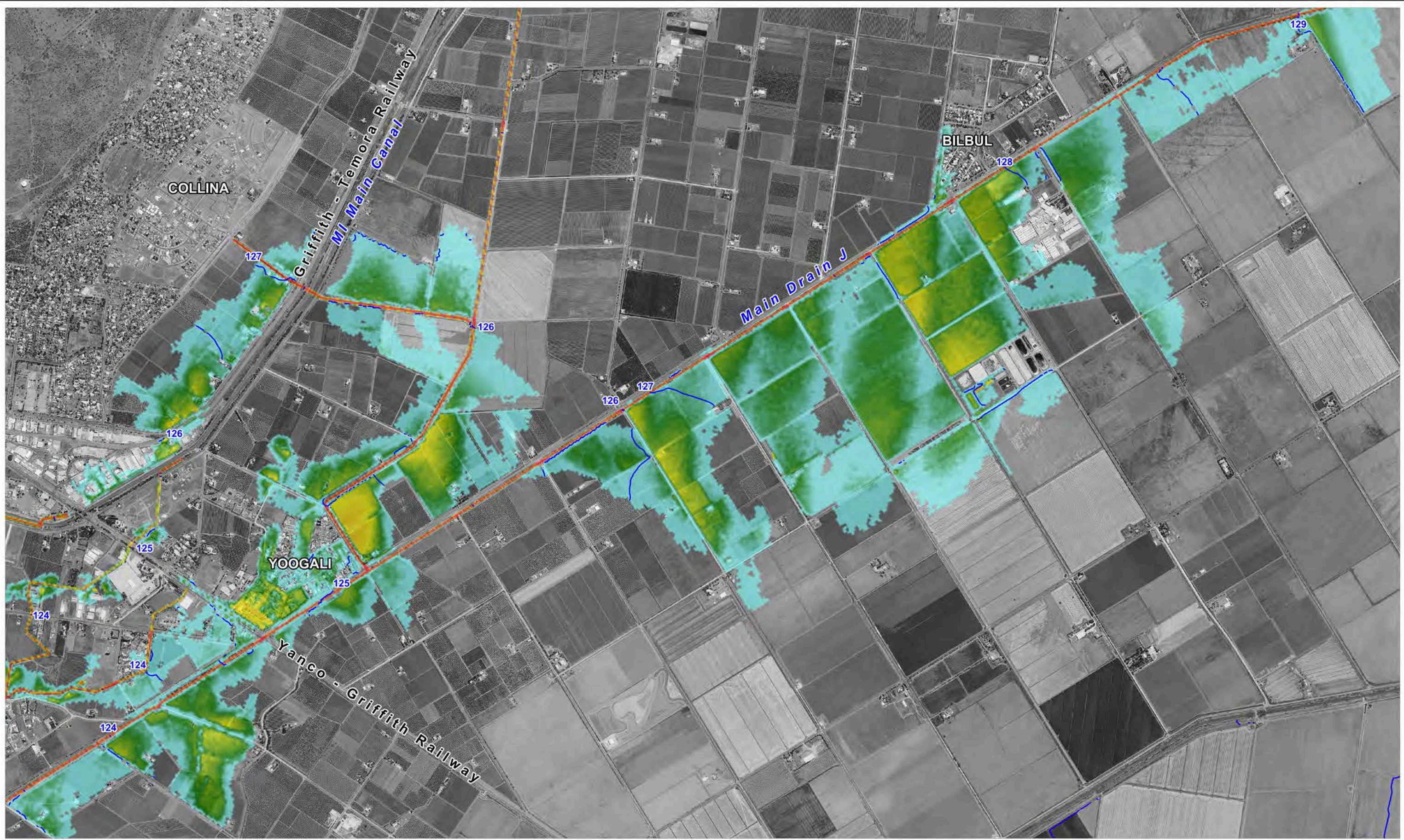
D-4

Rev:

A

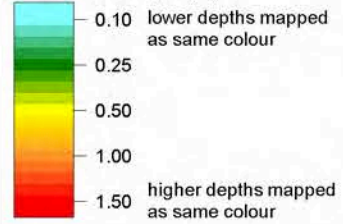


Filepath : K:\N20024_Main_Drain_J_Mirrool_Ck_FRMS\MapInfo\Workspaces\DRG_404_140915_0.5%AEP_Results.WOR



LEGEND

Peak Flood Depth (m)



Peak Flood Level
Contours (m AHD)

Title:

Griffith Main Drain J Catchment Flood Study 0.5% AEP Modelled Peak Flood Conditions - Yoogali

BMT WBM endeavours to ensure that the information provided in this map is correct at the time of publication. BMT WBM does not warrant, guarantee or make representations regarding the currency and accuracy of information contained in this map.



0 0.5 1km
Approx. Scale

Figure:

D-5

Rev:

A



Filepath : K:\N20024_Main_Drain_J_Mirrool_Ck_FRMS\MapInfo\Workspaces\DRG_405_140915_0.5%AEP_Results.WOR



LEGEND

Peak Flood Depth (m)

0.10 lower depths mapped as same colour

0.25

0.50

1.00

1.50 higher depths mapped as same colour

20 Peak Flood Level Contours (m AHD)

Title:
**Griffith Main Drain J Catchment Flood Study 0.5% AEP
Modelled Peak Flood Conditions - Hanwood**

BMT WBM endeavours to ensure that the information provided in this map is correct at the time of publication. BMT WBM does not warrant, guarantee or make representations regarding the currency and accuracy of information contained in this map.

Filepath : K:\N20024_Main_Drain_J_Mirrool_Ck_FRMS\MapInfo\Workspaces\DRG_406_140915_0.5%AEP_Results.WOR

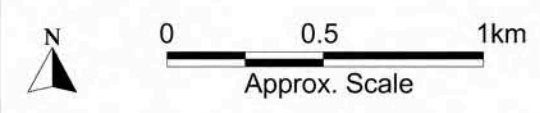
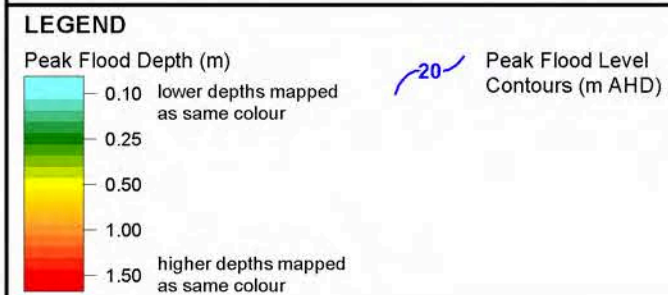
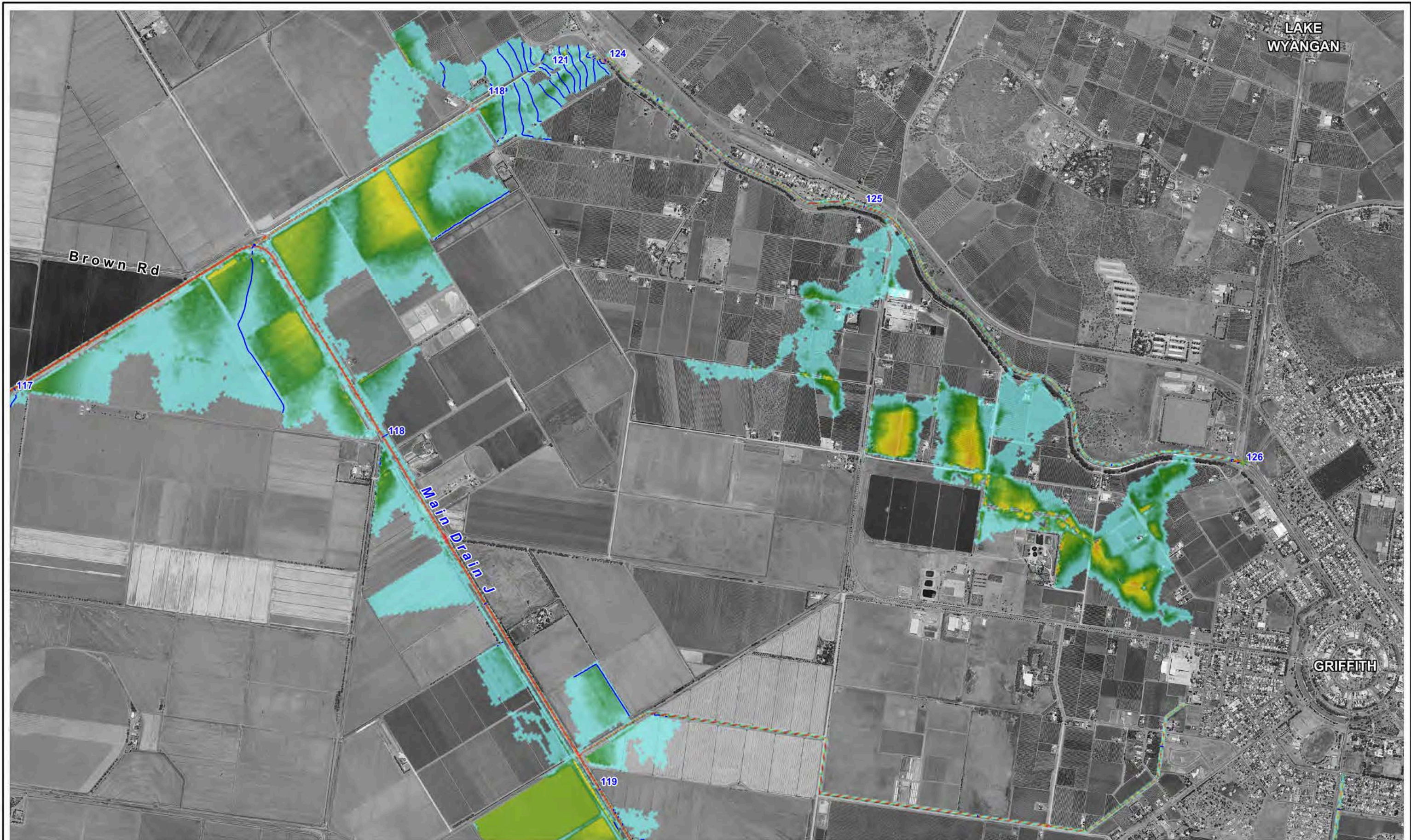


Figure:
D-6

Rev:
B


www.bmtwbm.com.au



Title:

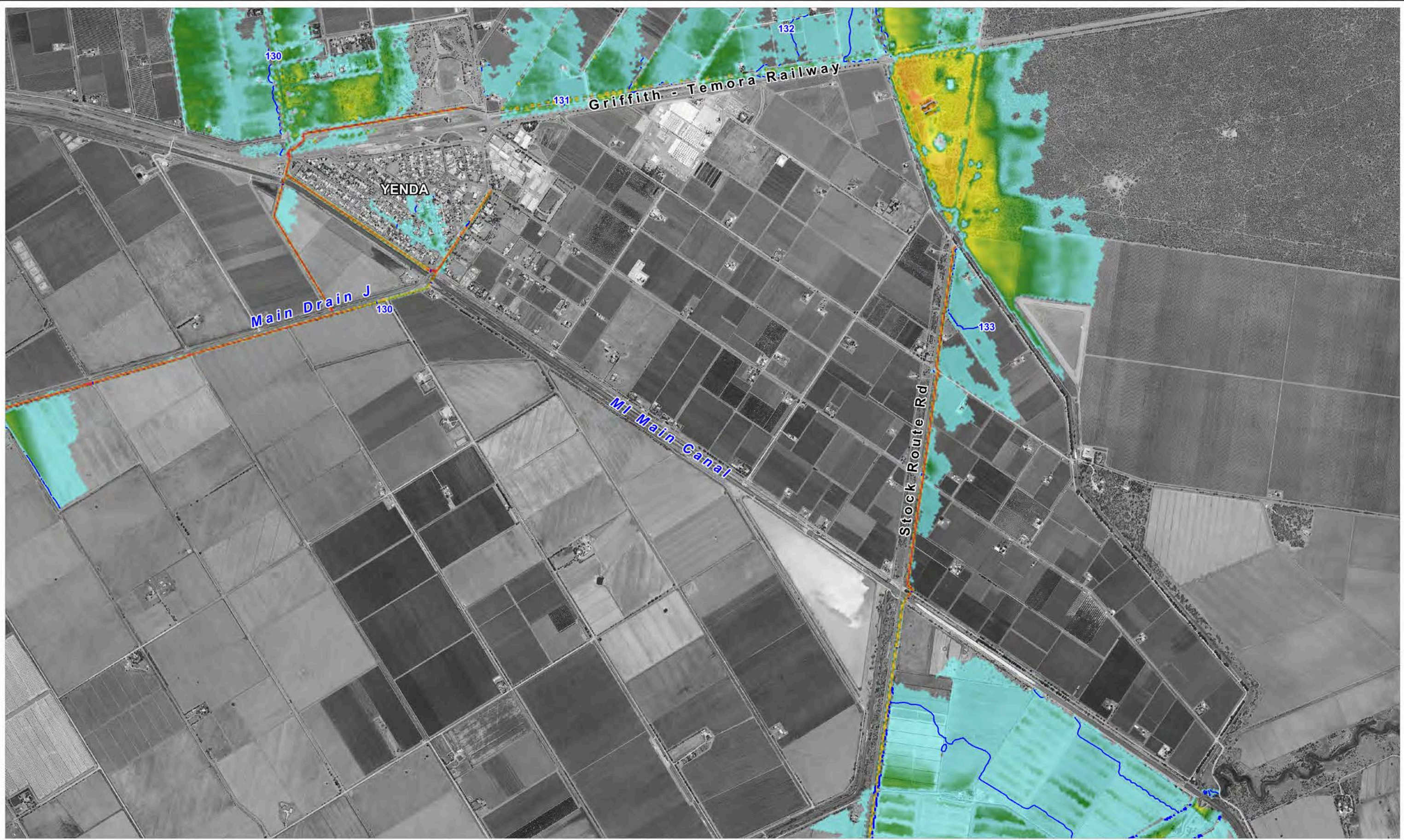
**Griffith Main Drain J Catchment Flood Study 0.5% AEP
Modelled Peak Flood Conditions - Warburn**

BMT WBM endeavours to ensure that the information provided in this map is correct at the time of publication. BMT WBM does not warrant, guarantee or make representations regarding the currency and accuracy of information contained in this map.



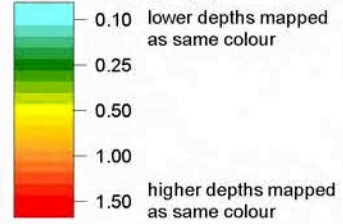
0 0.5 1km
Approx. Scale

Filepath : K:\N20024_Main_Drain_J_Mirrool_Ck_FRMS\MapInfo\Workspaces\DRG_407_140915_0.5%AEP_Results.WOR



LEGEND

Peak Flood Depth (m)



Peak Flood Level
Contours (m AHD)

Title:

**Griffith Main Drain J Catchment Flood Study 0.5% AEP
Yenda Peak Flood Conditions - Local Runoff Only**

BMT WBM endeavours to ensure that the information provided in this map is correct at the time of publication. BMT WBM does not warrant, guarantee or make representations regarding the currency and accuracy of information contained in this map.

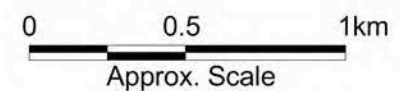


Figure:

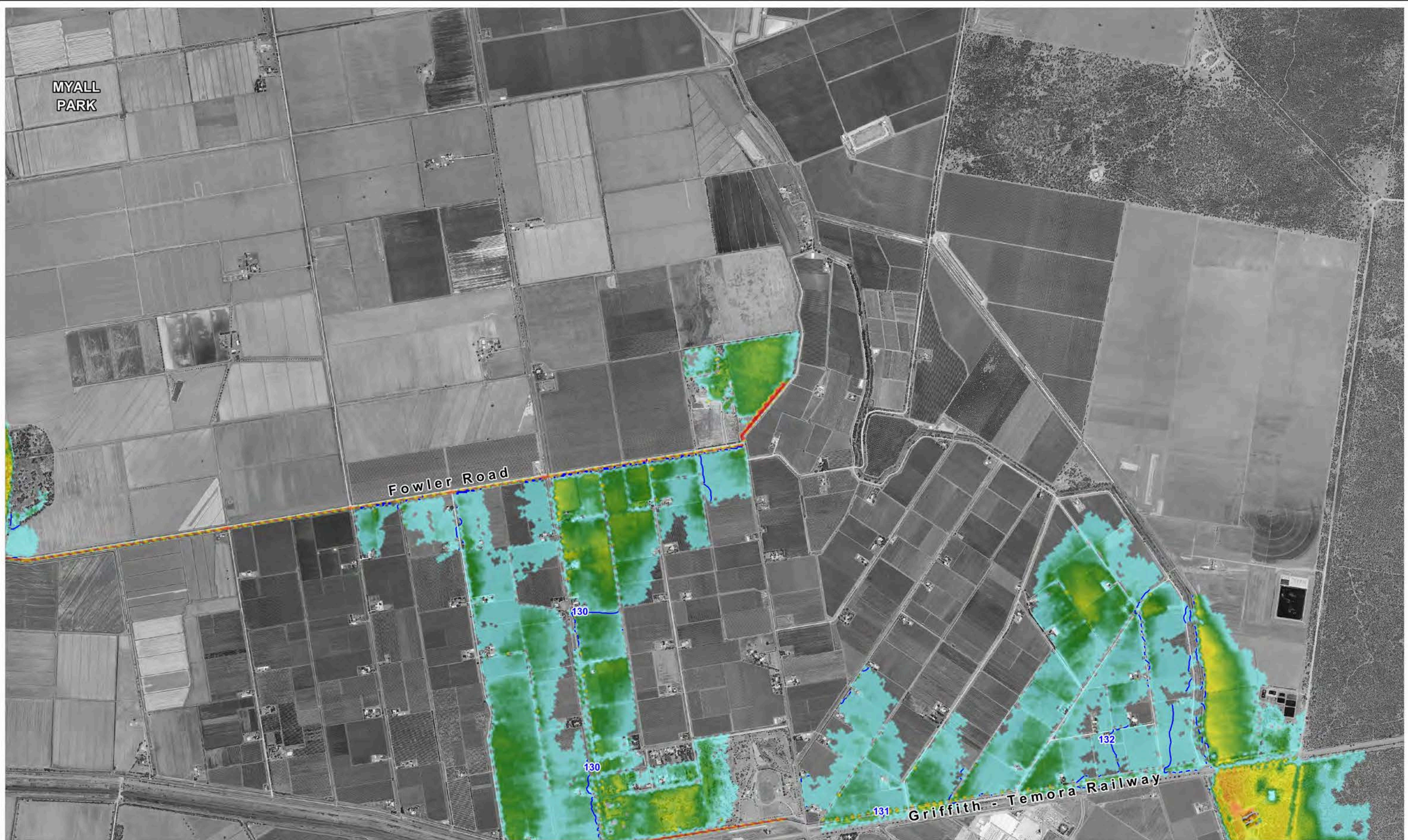
D-8

Rev:

A



Filepath : K:\N20024_Main_Drain_J_Mirrool_Ck_FRMS\MapInfo\Workspaces\DRG_408_140915_0.5%AEP_Results.WOR



LEGEND
Peak Flood Depth (m)

0.10 lower depths mapped as same colour
0.25
0.50
1.00
1.50 higher depths mapped as same colour

Peak Flood Level Contours (m AHD)

Title:
Griffith Main Drain J Catchment Flood Study 0.5% AEP North Yenda Peak Flood Conditions - Local Runoff Only

BMT WBM endeavours to ensure that the information provided in this map is correct at the time of publication. BMT WBM does not warrant, guarantee or make representations regarding the currency and accuracy of information contained in this map.

N

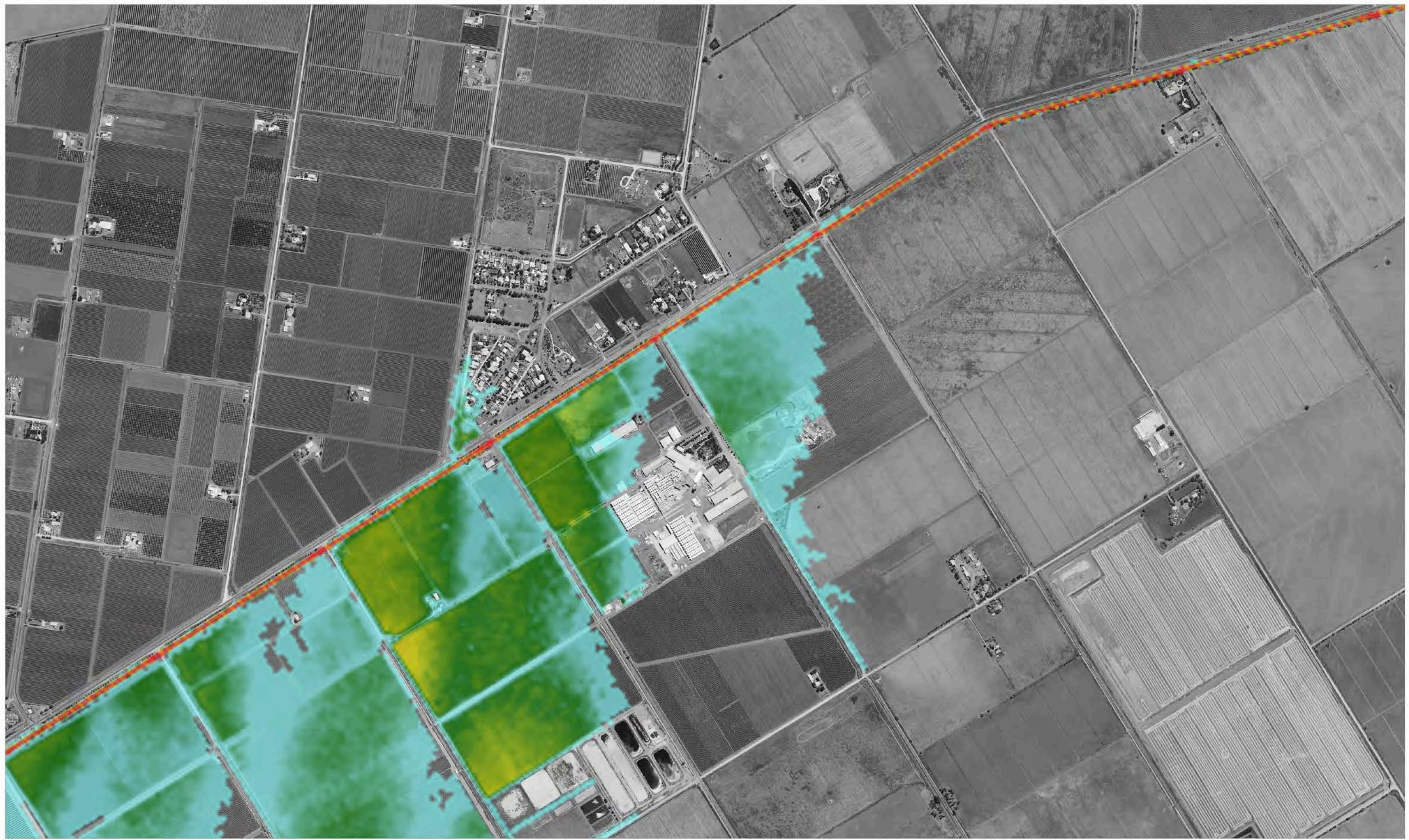
0 0.5 1km
Approx. Scale

Filepath : K:\N20024_Main_Drain_J_Mirrool_Ck_FRMS\MapInfo\Workspaces\DRG_409_140915_0.5%AEP_Results.WOR

Figure:
D-9

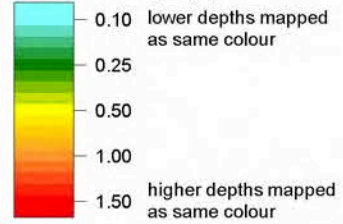
Rev:
A

BMT WBM
www.bmtwbm.com.au

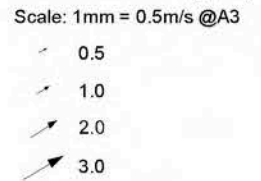


LEGEND

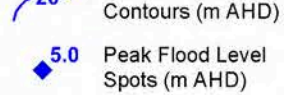
Peak Flood Depth (m)



Peak Flood Velocity (m/s)



Peak Flood Level



Title:

Griffith Main Drain J Catchment Flood Study 1% AEP Modelled Peak Flood Conditions - Bilbul

BMT WBM endeavours to ensure that the information provided in this map is correct at the time of publication. BMT WBM does not warrant, guarantee or make representations regarding the currency and accuracy of information contained in this map.

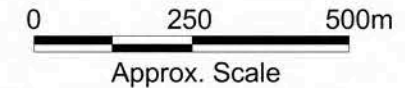


Figure:

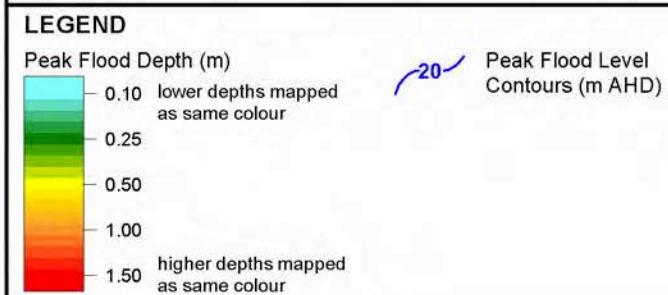
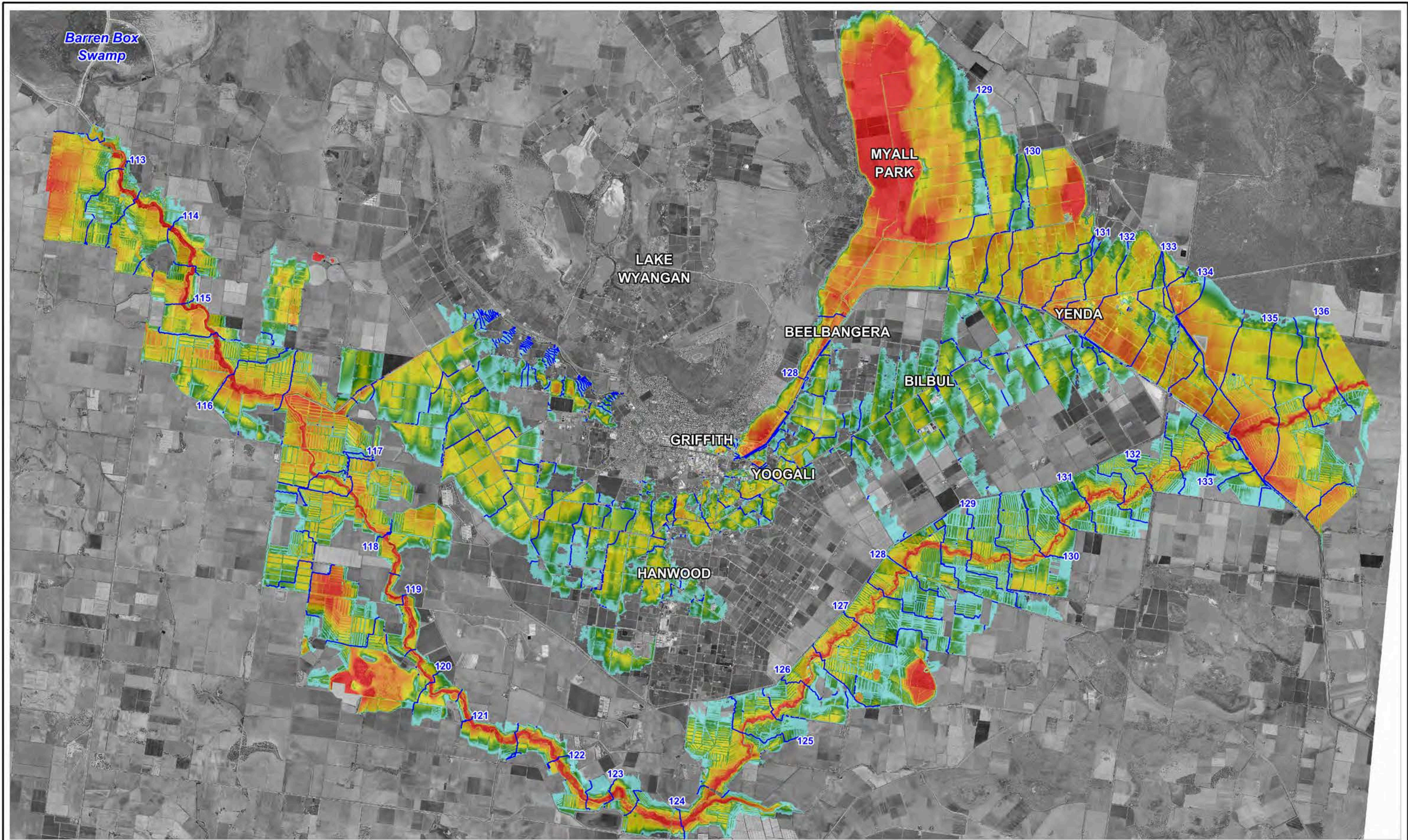
E-1

Rev:

A



Filepath : K:\N20024_Main_Drain_J_Mirrool_Ck_FRMS\MapInfo\Workspaces\DRG_501_140516_1% AEP_Results.WOR



Title:

Griffith Main Drain J Catchment Flood Study PMF

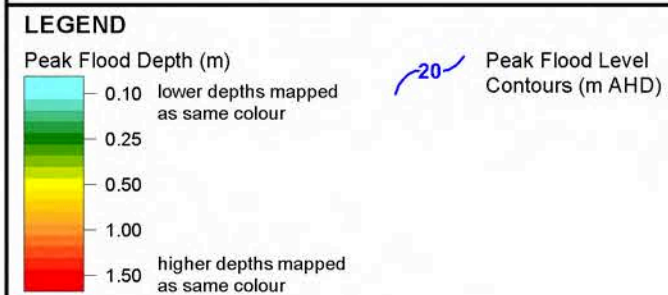
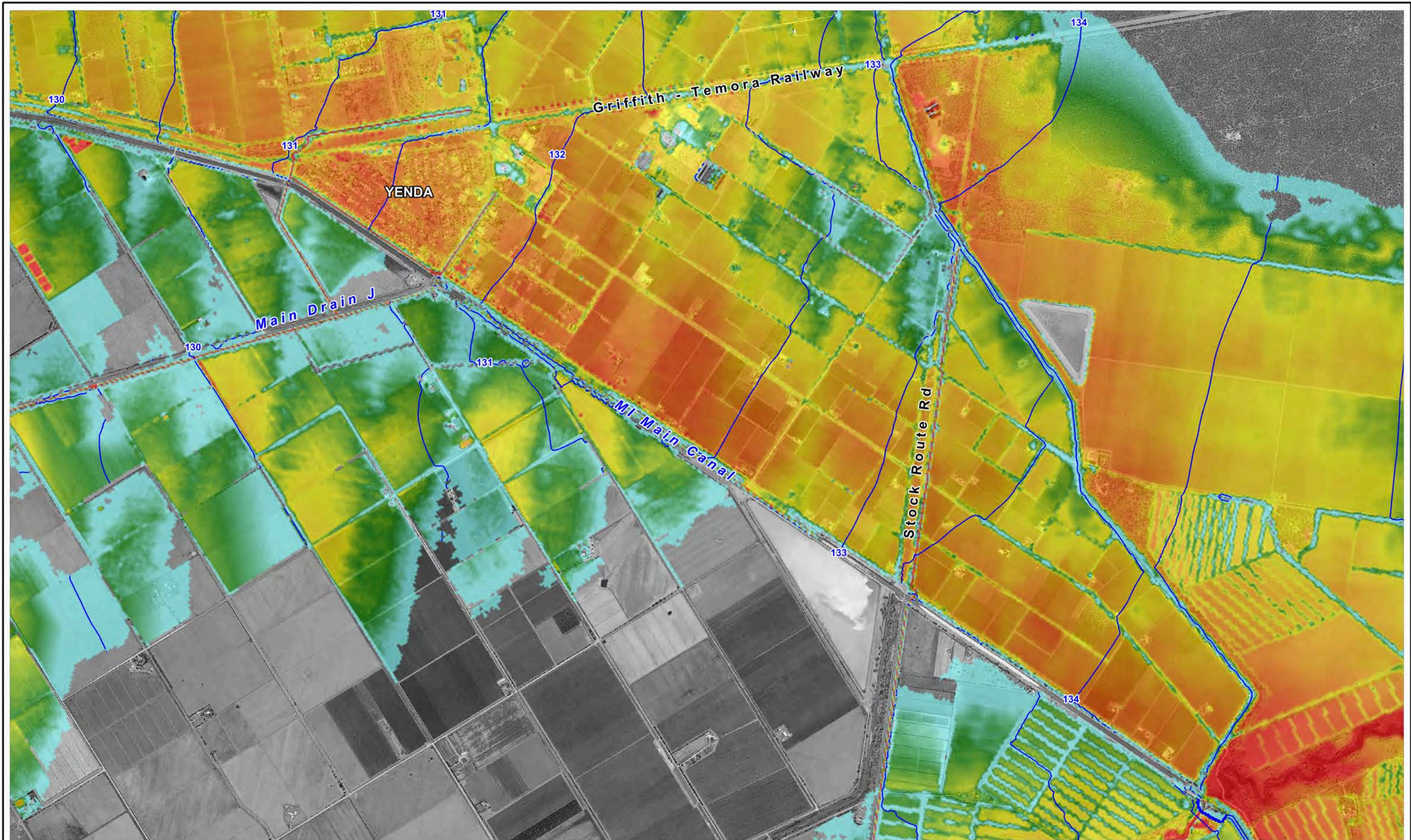
Modelled Peak Flood Conditions - Overview

BMT WBM endeavours to ensure that the information provided in this map is correct at the time of publication. BMT WBM does not warrant, guarantee or make representations regarding the currency and accuracy of information contained in this map.



0 2.5 5km

Approx. Scale



Title:

Griffith Main Drain J Catchment Flood Study PMF Modelled Peak Flood Conditions - Yenda

BMT WBM endeavours to ensure that the information provided in this map is correct at the time of publication. BMT WBM does not warrant, guarantee or make representations regarding the currency and accuracy of information contained in this map.



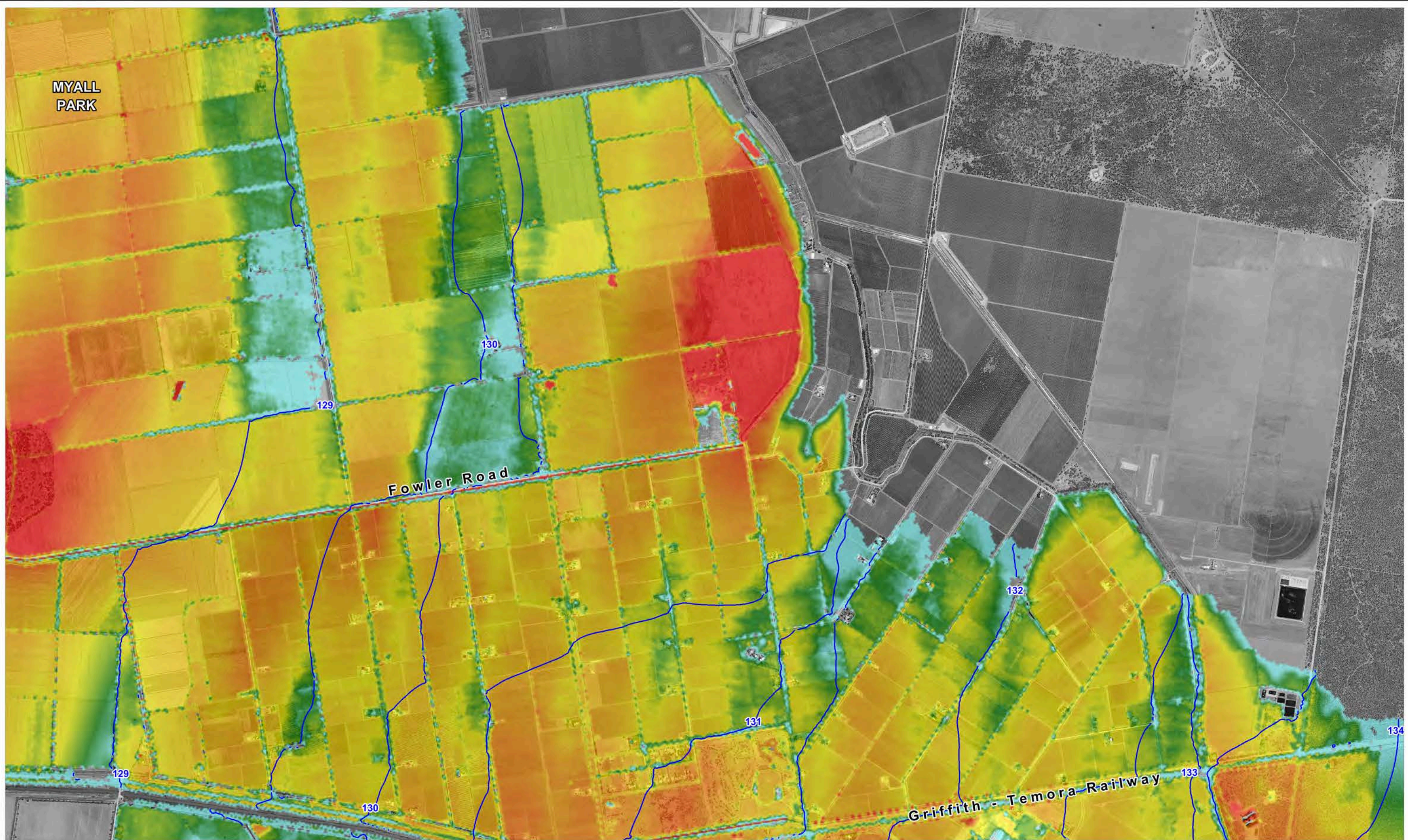
0 0.5 1km
Approx. Scale

Figure:
E-2

Rev:
A



Filepath : K:\N20024_Main_Drain_J_Mirrool_Ck_FRMS\MapInfo\Workspaces\DRG_502_140915_PMF_Results.WOR



LEGEND

Peak Flood Depth (m)

0.10 lower depths mapped as same colour

0.25

0.50

1.00

1.50 higher depths mapped as same colour

Peak Flood Level Contours (m AHD)

20

Title:

Griffith Main Drain J Catchment Flood Study PMF Modelled Peak Flood Conditions - North Yenda

BMT WBM endeavours to ensure that the information provided in this map is correct at the time of publication. BMT WBM does not warrant, guarantee or make representations regarding the currency and accuracy of information contained in this map.

N

0 0.5 1km

Approx. Scale

Filepath : K:\N20024_Main_Drain_J_Mirrol_Ck_FRMS\MapInfo\Workspaces\DRG_503_140915_PMF_Results.WOR

Figure:

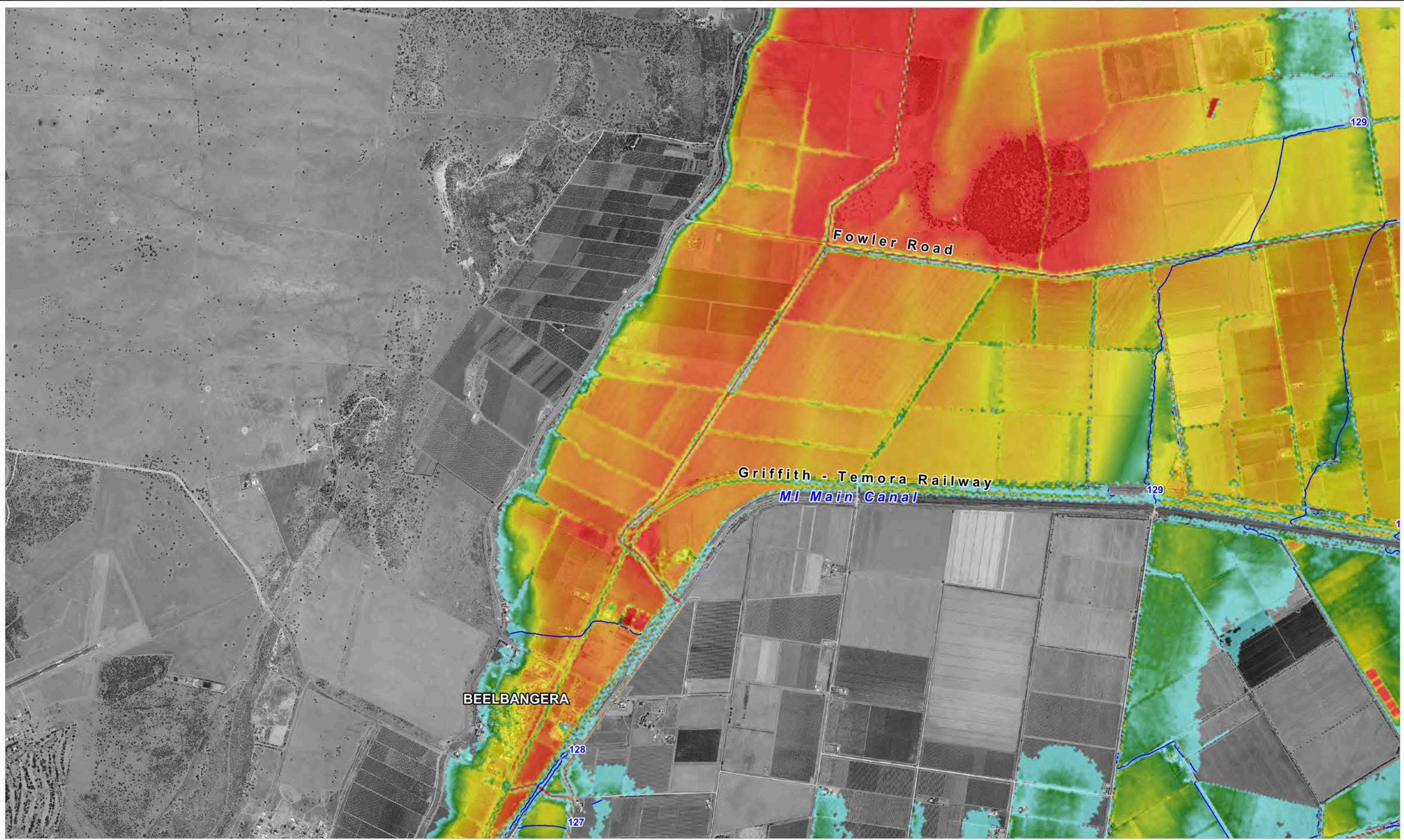
E-3

Rev:

A

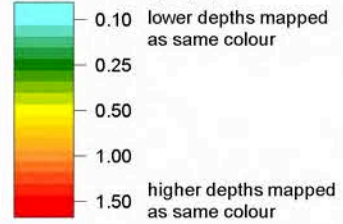
 **BMT WBM**

www.bmtwbm.com.au



LEGEND

Peak Flood Depth (m)



Peak Flood Level
Contours (m AHD)

Title:

**Griffith Main Drain J Catchment Flood Study PMF
Modelled Peak Flood Conditions - Beelbangera**

BMT WBM endeavours to ensure that the information provided in this map is correct at the time of publication. BMT WBM does not warrant, guarantee or make representations regarding the currency and accuracy of information contained in this map.



0 0.5 1km
Approx. Scale

Figure:

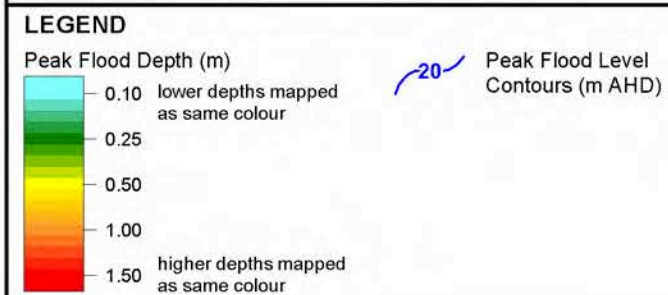
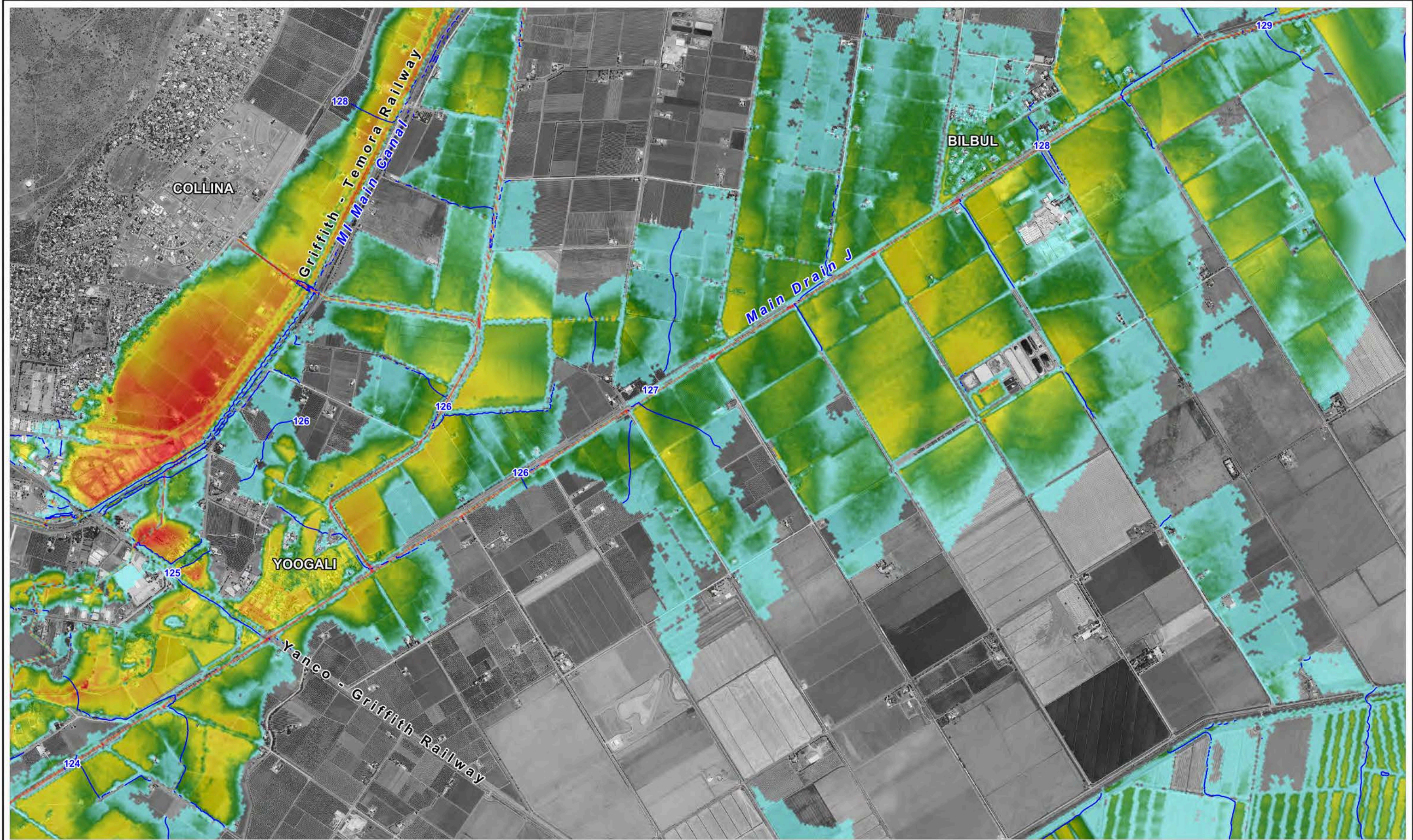
E-4

Rev:

A



Filepath : K:\N20024_Main_Drain_J_Mirrool_Ck_FRMS\MapInfo\Workspaces\DRG_504_140915_PMF_Results.WOR



Title:

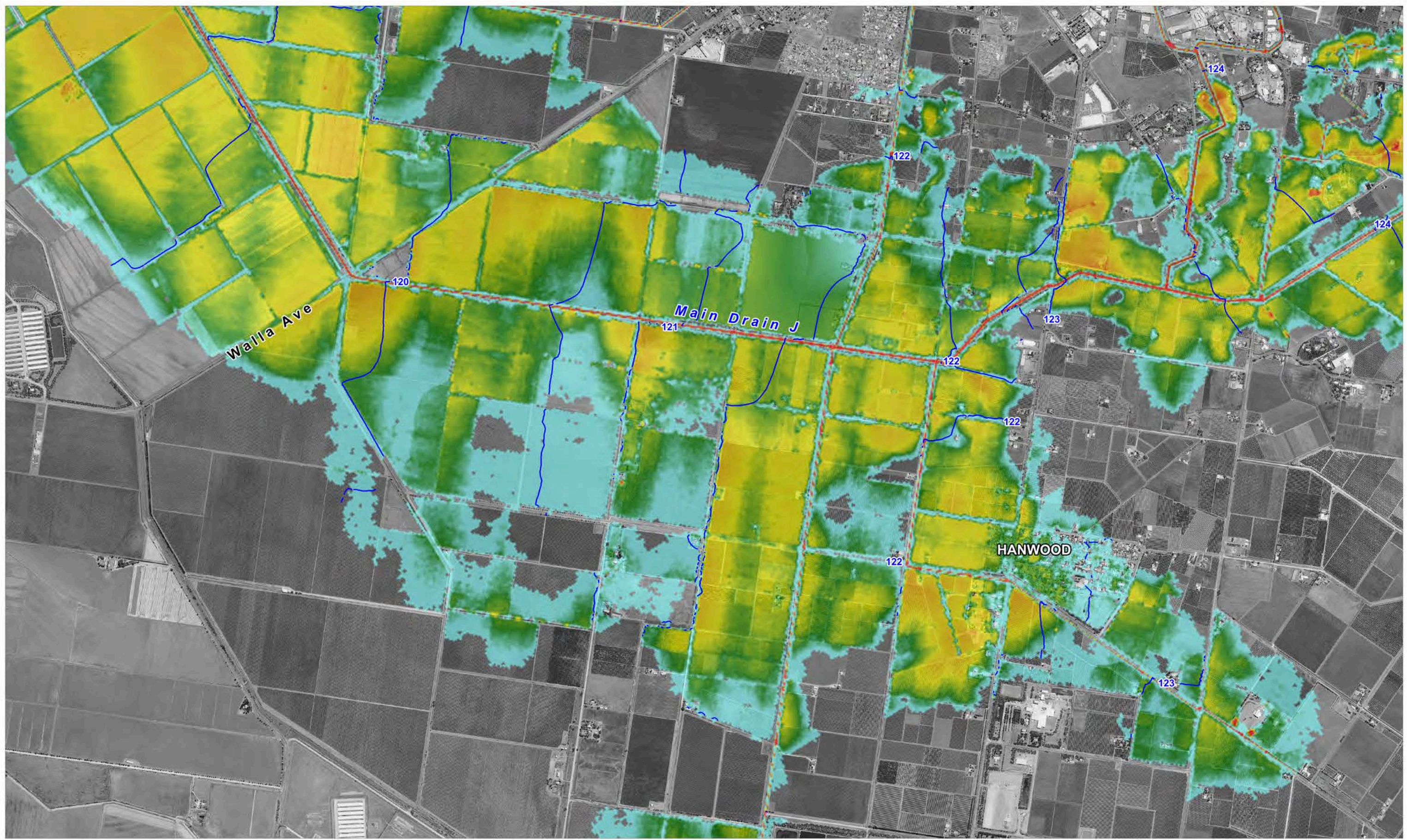
Griffith Main Drain J Catchment Flood Study PMF Modelled Peak Flood Conditions - Yoogali

BMT WBM endeavours to ensure that the information provided in this map is correct at the time of publication. BMT WBM does not warrant, guarantee or make representations regarding the currency and accuracy of information contained in this map.



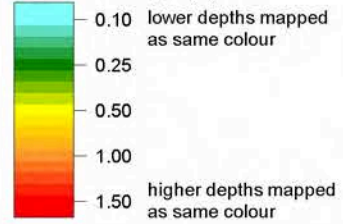
0 0.5 1km
Approx. Scale

Filepath : K:\N20024_Main_Drain_J_Mirrool_Ck_FRMS\MapInfo\Workspaces\DRG_505_140915_PMF_Results.WOR



LEGEND

Peak Flood Depth (m)



Peak Flood Level
Contours (m AHD)

Title:

**Griffith Main Drain J Catchment Flood Study PMF
Modelled Peak Flood Conditions - Hanwood**

BMT WBM endeavours to ensure that the information provided in this map is correct at the time of publication. BMT WBM does not warrant, guarantee or make representations regarding the currency and accuracy of information contained in this map.



0 0.5 1km
Approx. Scale

Figure:

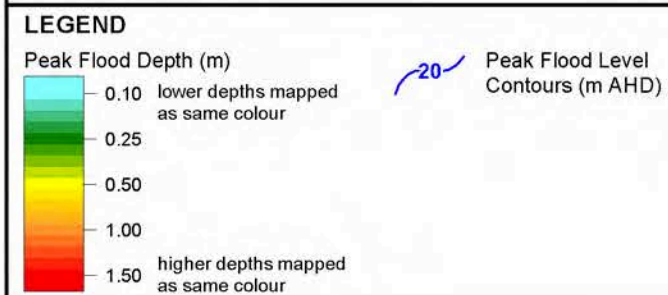
E-6

Rev:

A



Filepath : K:\N20024_Main_Drain_J_Mirrool_Ck_FRMS\MapInfo\Workspaces\DRG_506_140915_PMF_Results.WOR



Title:

Griffith Main Drain J Catchment Flood Study PMF

Modelled Peak Flood Conditions - Warburn

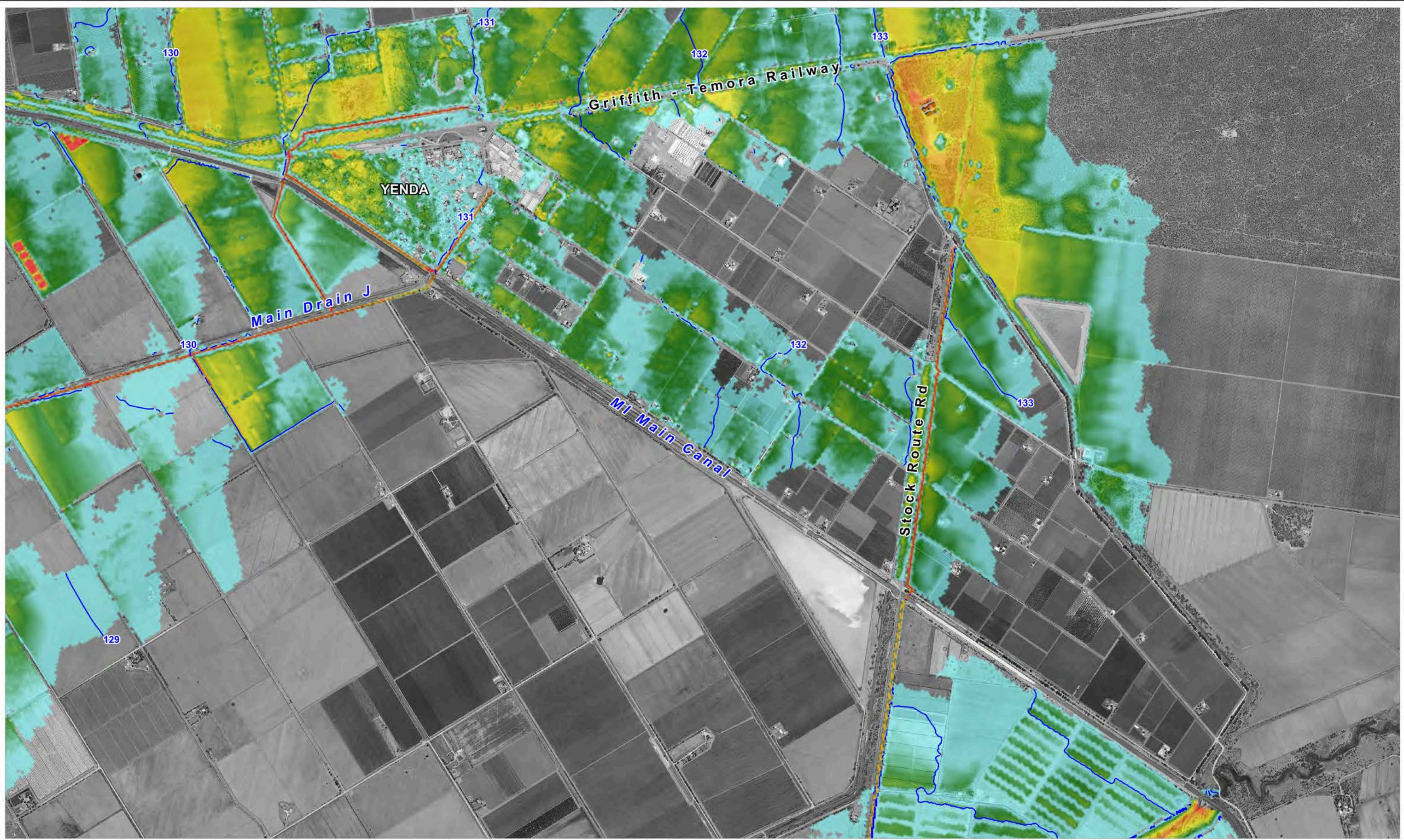
BMT WBM endeavours to ensure that the information provided in this map is correct at the time of publication. BMT WBM does not warrant, guarantee or make representations regarding the currency and accuracy of information contained in this map.



0 0.5 1km

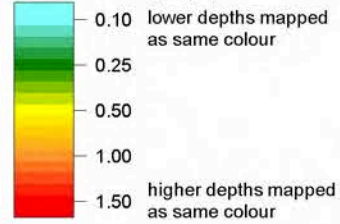
Approx. Scale

Filepath : K:\N20024_Main_Drain_J_Mirrool_Ck_FRMS\MapInfo\Workspaces\DRG_507_140915_PMF_Results.WOR



LEGEND

Peak Flood Depth (m)



Peak Flood Level
Contours (m AHD)

Title:

**Griffith Main Drain J Catchment Flood Study PMF
Yenda Peak Flood Conditions - Local Runoff Only**

BMT WBM endeavours to ensure that the information provided in this map is correct at the time of publication. BMT WBM does not warrant, guarantee or make representations regarding the currency and accuracy of information contained in this map.

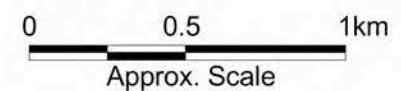


Figure:

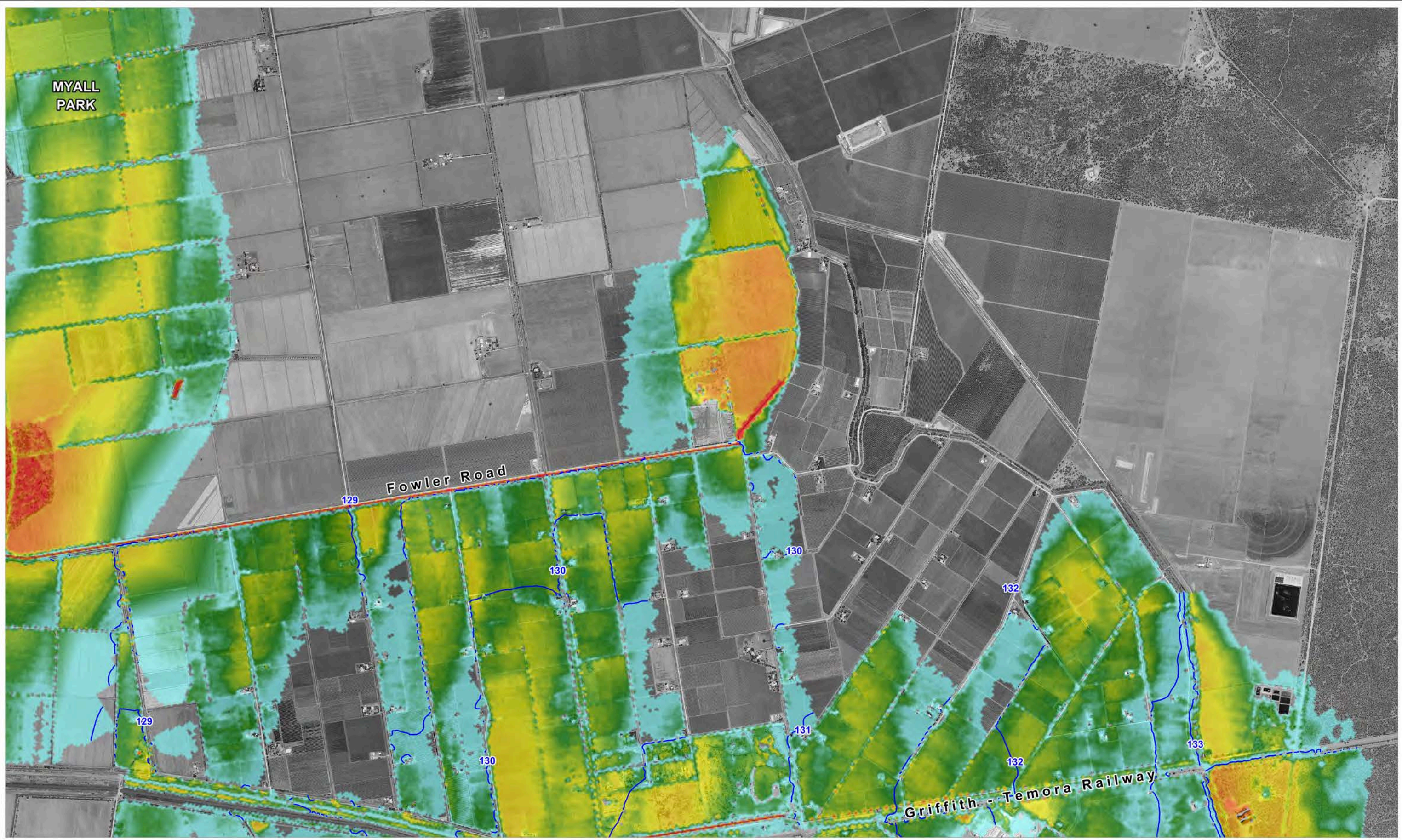
E-8

Rev:

A



Filepath : K:\N20024_Main_Drain_J_Mirrool_Ck_FRMS\MapInfo\Workspaces\DRG_508_140915_PMF_Results.WOR



LEGEND

Peak Flood Depth (m)

0.10	lower depths mapped as same colour
0.25	
0.50	
1.00	
1.50	higher depths mapped as same colour

Peak Flood Level Contours (m AHD)

20

Title:
**Griffith Main Drain J Catchment Flood Study PMF
North Yenda Peak Flood Conditions - Local Runoff Only**

BMT WBM endeavours to ensure that the information provided in this map is correct at the time of publication. BMT WBM does not warrant, guarantee or make representations regarding the currency and accuracy of information contained in this map.

Filepath : K:\N20024_Main_Drain_J_Mirrool_Ck_FRMS\MapInfo\Workspaces\DRG_509_140915_PMF_Results.WOR

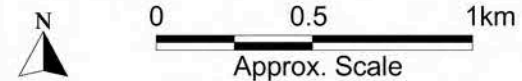


Figure:
E-9

Rev:
A

 **BMT WBM**
www.bmtwbm.com.au